

# OLD STYLE 8' TRAILED TOPPER SPARE PARTS BOOK



**Table of Contents:**

OLD STYLE 8ft TRAILED TOPPER SPARE PARTS LIST

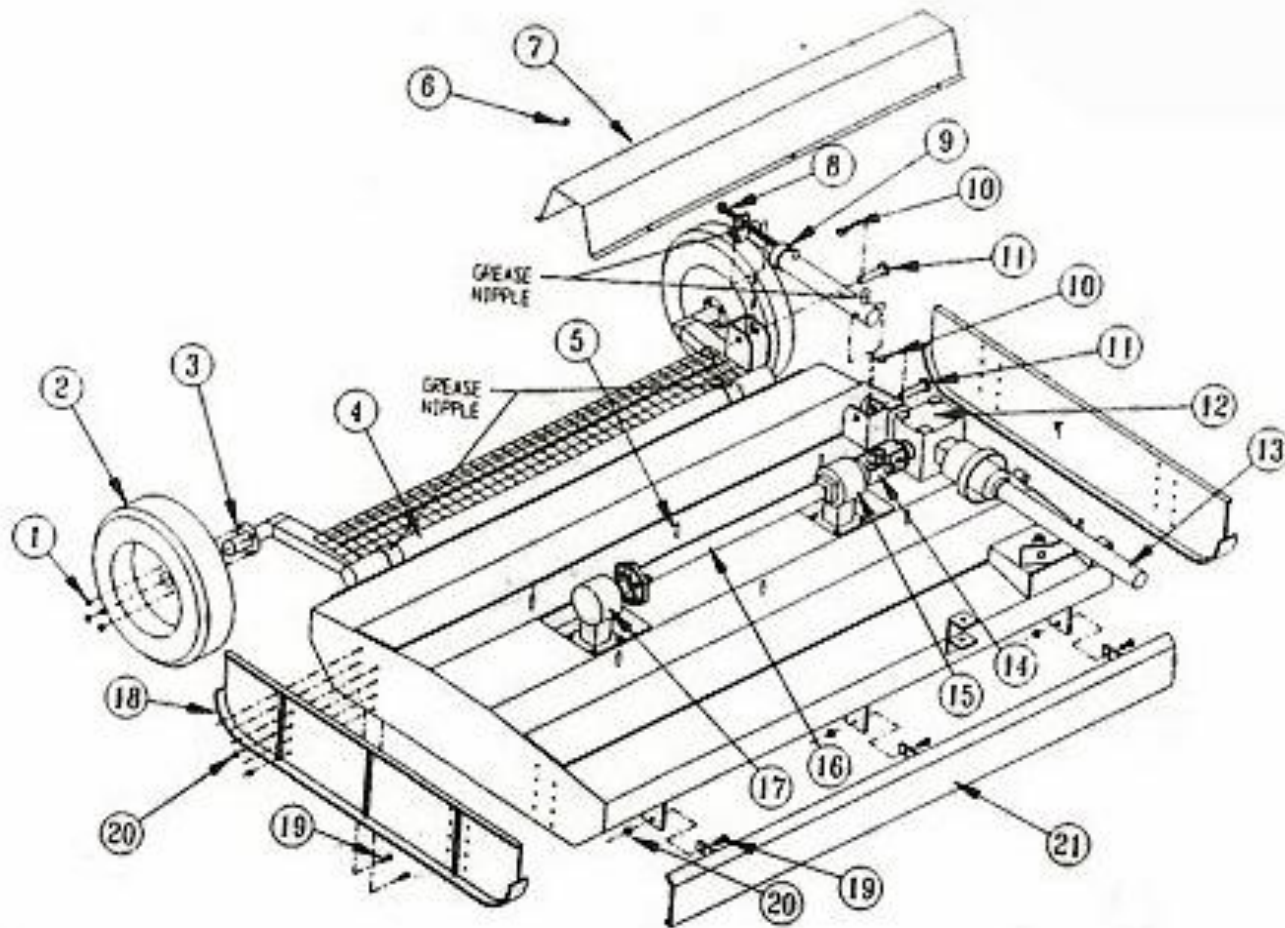
Table 001 : 8ft TRAILED TOPPER MAIN ASSEMBLY CHASSIS

Table 002: 8ft TRAILED TOPPER DRAWBAR

Table 003: 8ft TRAILED TOPPER FRONT ROTOR ASSEMBLY

Table 004: 8ft TRAILED TOPPER REAR ROTOR ASSEMBLY

8ft TRAILED TOPPER CHASSIS

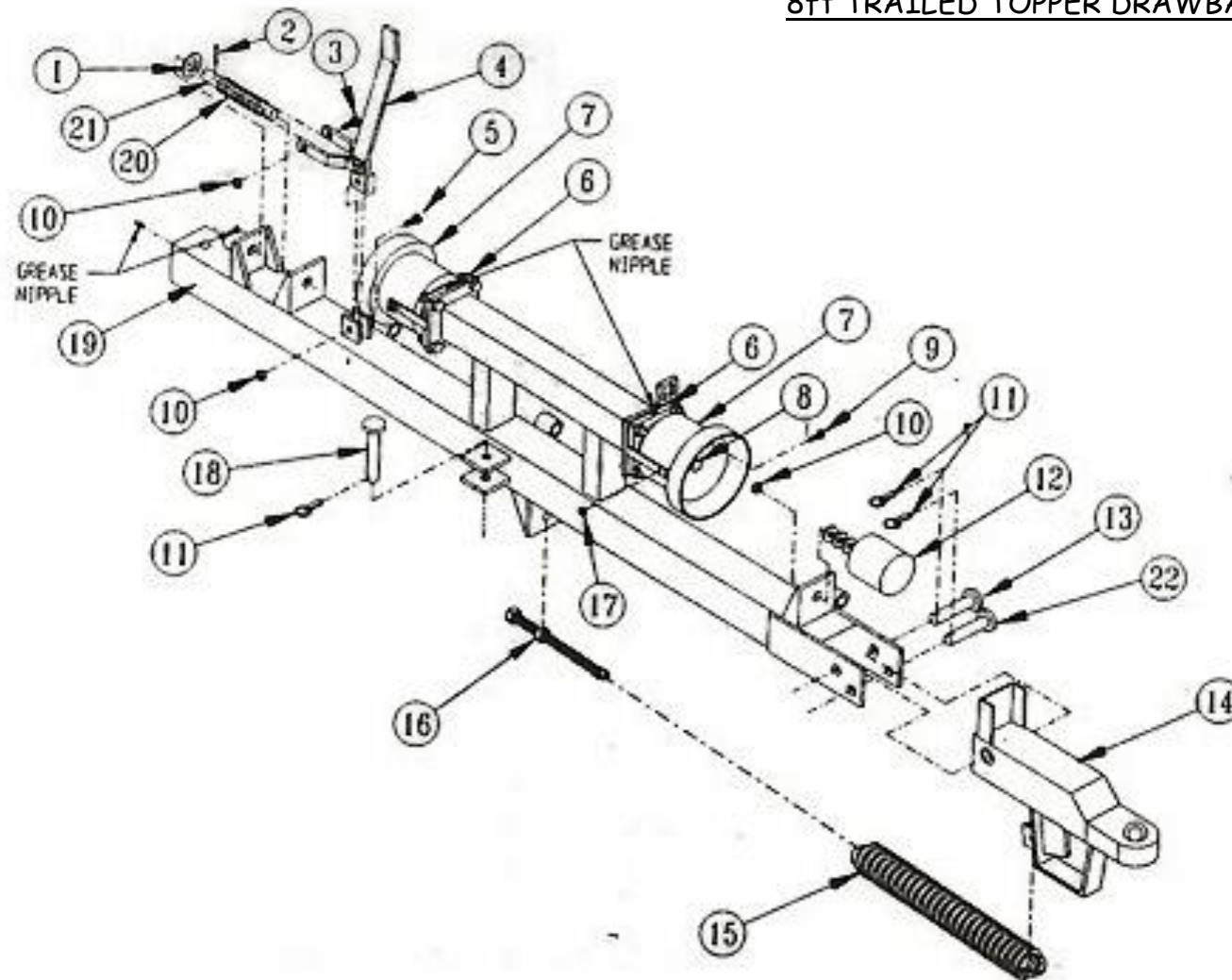


SEE TABLE NO: 001

**TABLE NO: 001 8ft TRAILED TOPPER CHASSIS**

<b>POS.</b>	<b>PART NO.</b>	<b>PCS.</b>	<b>DESCRIPTION:</b>
1	BLT100	8	M12 WHEEL NUT
2	TOPCNR002	2	WHEEL
3	BLT031	8	M12x30 WHEEL STUD
4	TOPCNR004	1	AXLE ASSEMBLY
5	ZFAS07	2	M10x30 SETSCREW
6	ZFAS20	2	M10 NYLOCK NUT
7	TOPCNR007	1	GEARBOX COVER
8	TOPCNR008	1	M20 WHEEL HEIGHT ADJUSTER
9	HCYL029	1	HYDRAULIC CYLINDER
10	ZFAS31	2	M10x40 LINCH PIN
11	BLT117	2	M25x110 PIN
12	ZGPP58	1	T27A GEARBOX
13	ZGPP103	1	PTO SHAFT
14	ZGPP110	1	UNIVERSAL JOINT
15	ZGPP55	1	205.809 GEARBOX
16	TOPCNR00014	1	CONNECTING SHAFT
17	ZGPP56	1	205.805 GEARBOX
18	TOPCNR015	2	SKID
19	ZFAS10	12	M12x30 SETSCREW
20	ZFAS22	12	M12 NYLOCK NUT
21	TOPCNR018	1	FRONT GUARD RAIL

8ft TRAILED TOPPER DRAWBAR

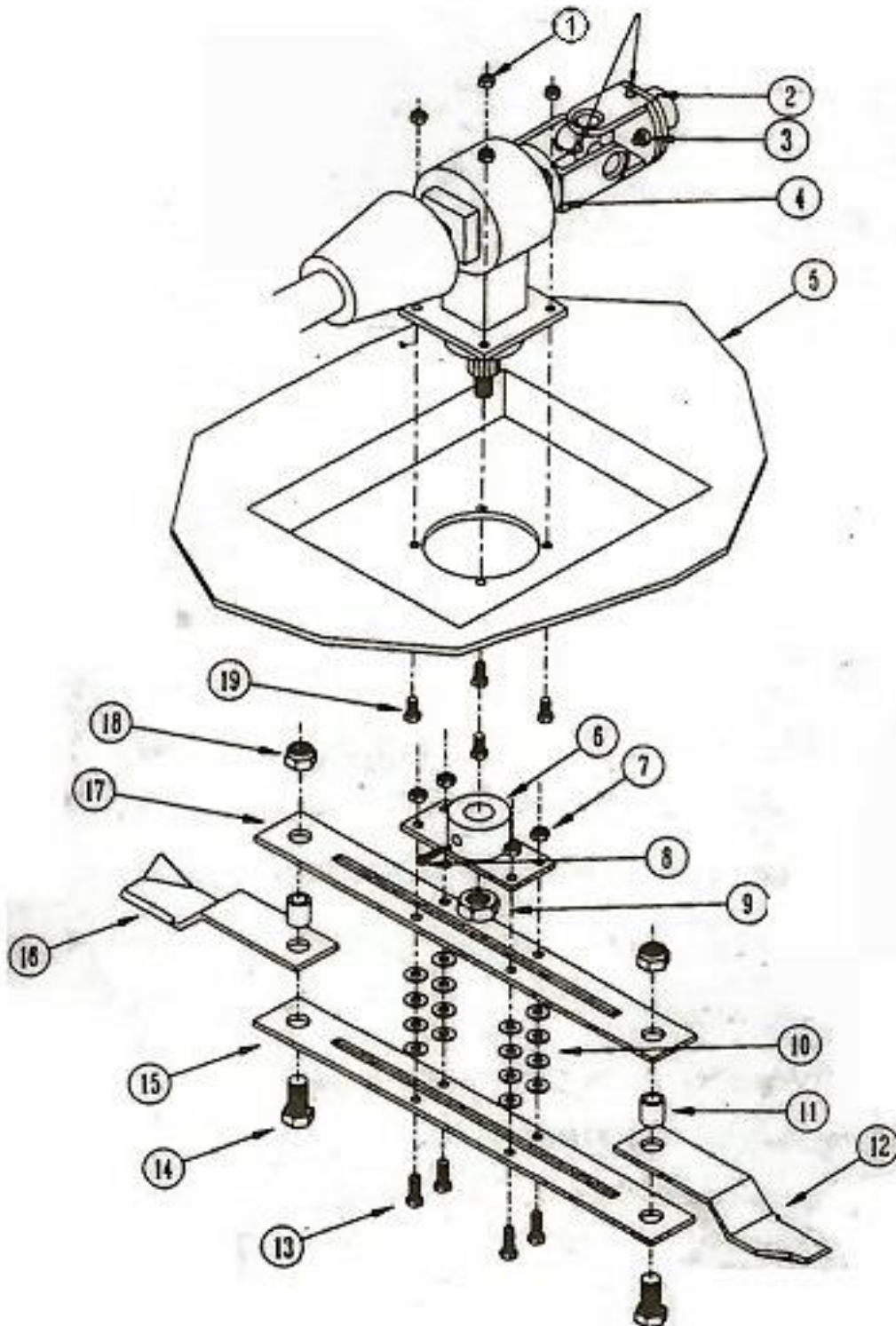


SEE TABLE NO: 002

**TABLE NO: 002 8ft TRAILED TOPPER DRAWBAR**

<b>POS.</b>	<b>PART NO.</b>	<b>PCS.</b>	<b>DESCRIPTION:</b>
1	BLT092	1	M30 WASHER
2	TOPCNR020	2	M6 x 70 SPLIT PIN
3	ZFAS44	1	M12x70 SETSCREW
4	TOPCNR022	1	MANUAL RELEASE
5	ZFAS15	1	M12x50 SETSCREW
6	ZGPP48	2	4 BOLT FLANGE BEARING
7	ZGPP03	2	PTO BUCKET
8	TOPCNR026	1	DRIVE ASSEMBLY
9	ZFAS07	2	M10x30 SETSCREW
10	ZFAS22/ZFAS45	2	M12 NYLOCK/M12 WASHER
11	ZFAS31	2	M10x40 LINCH PIN
12	TOPCNR027	1	100mm RUBBER BUFFER
13	TOPCNR028	1	DRAWBAR PIN
14	TOPCNR029	1	HITCH
15	TOPCNR030	1	HITCH TENSION SPRING
16	TOPCNR031	1	M20 SPRING TENSIONER
17	ZFAS20	1	M10 NYLOCK NUT
18	TOPCNR033	1	20mm 3" PIN
19	TOPCNR034	1	DRAWBAR
20	TOPCNR035	1	COMPRESSION SPRING
21	TOPCNR036	1	RELEASE PIN
22	TOPCNR037	1	STOP PIN
10	ZFAS45	1	M12 WASHER

8ft TRAILED TOPPER FRONT ROTOR



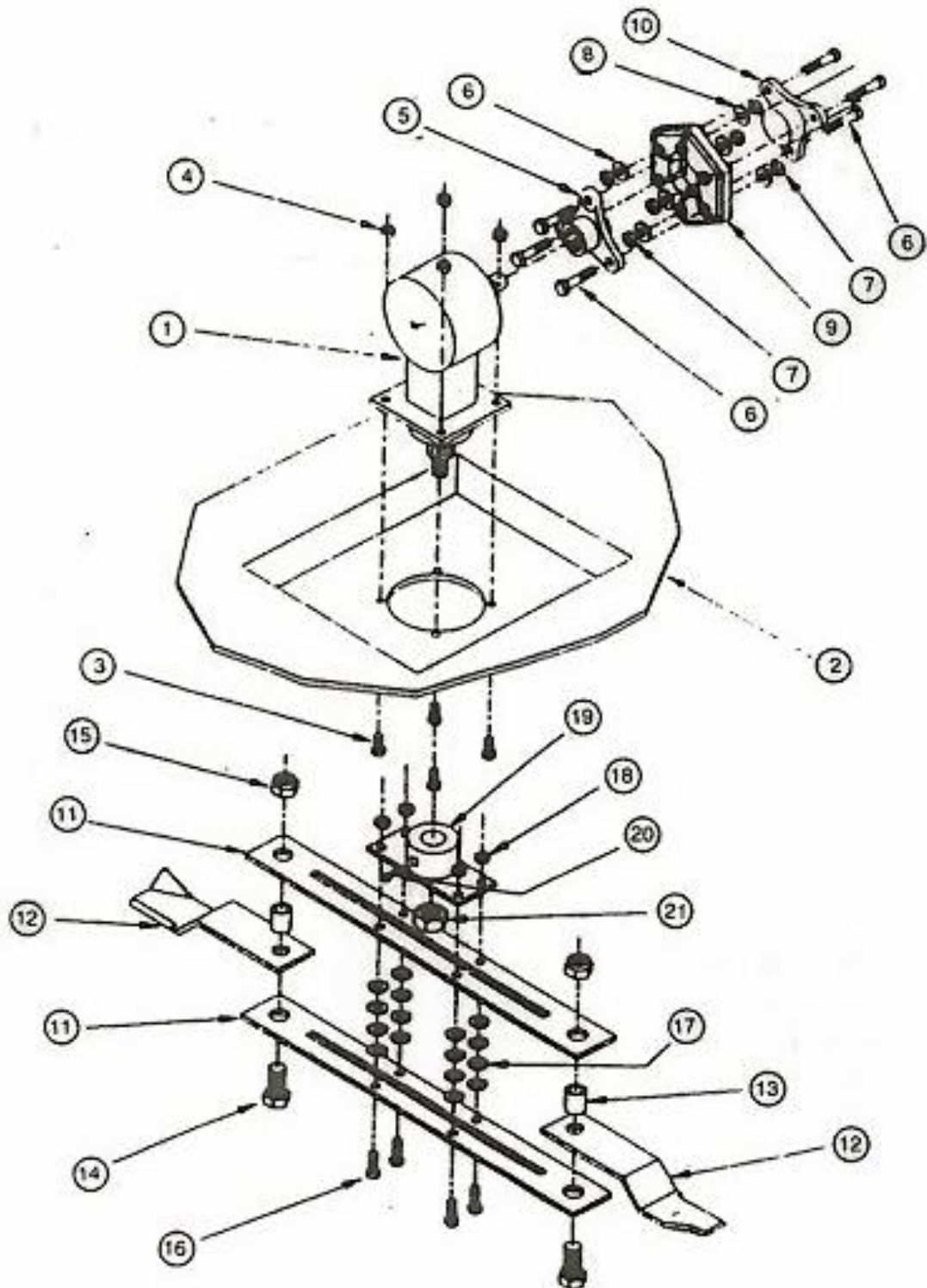
SEE TABLE NO: 003

**TABLE NO: 003 8ft TRAILED TOPPER FRONT ROTOR**

<b>POS.</b>	<b>PART NO.</b>	<b>PCS.</b>	<b>DESCRIPTION:</b>
1	ZFAS23	4	M16 NYLOCK NUT
2	ZGPP110	1	UNIVERSAL JOINT
3	ZFAS14	1	M10x50 SHEARBOLT 8.8
4	ZGPP55	1	205.809 GEARBOX
5			MAIN FRAME
6	TOPCNR00050	1	CARRIER HOUSING BUSHING
7	ZFAS123	4	½" UNF NYLOCK NUT
8	ZFAS58	1	COTTER PIN
9	GBL.8.2.2.01144	1	CASTLE NUT
10	ZFAS45	16	M12 WASHER
11	ZGPP29	2	BLADE BUSH
12	ZGPP08	1	LHD TOPPER BLADE
13	ZFAS122	4	½" x 2" UNF BOLT
14	ZFAS37	2	M20x55 SETSCREW
15	TOPCNR00044	1	FLAIL CARRIER 720mm
16	ZGPP08	1	LHD TOPPER BLADE
17	TOPCNR00044	1	FLAIL CARRIER 720mm
18	ZFAS24	2	M20 NYLOCK
19	ZFAS11	4	M16X45 SETSCREW



8ft TRAILED TOPPER END ROTOR



SEE TABLE NO: 004

**TABLE NO: 004 8ft TRAILED TOPPER END ROTOR**

<b>POS.</b>	<b>PART NO.</b>	<b>PCS.</b>	<b>DESCRIPTION:</b>
1	ZGPP56	1	205.805 GEARBOX
2			MAIN FRAME
3	ZFAS11	4	M16X45 SETSCREW
4	ZFAS23	4	M16 NYLOCK NUT
5	ZGPP116	1	TRIPOD COUPLING
6	ZFAS47	6	M12X80 BOLT
7	ZFAS22	6	M12 NYLOCK NUT
8	ZFAS45	16	M12 WASHER
9	ZGPP82	1	RUBBER DOUGHNUT
10	TOPCNR00014	1	CONNECTING SHAFT
11	TOPCNR00044	2	FLAIL CARRIER 720mm
12	ZGPP09	2	RHD TOPPER BLADE
13	ZGPP29	2	BLADE BUSH
14	ZFAS37	2	M20x55 SETSCREW
15	ZFAS24	2	M20 NYLOCK
16	ZFAS122	4	½" x 2" UNF BOLT
17	ZFAS45	16	M12 WASHER
18	ZFAS123	4	½" UNF NYLOCK NUT
19	TOPCNR00050	1	CARRIER HOUSING BUSHING
20	ZFAS58	1	COTTER PIN
21	GBL.8.2.2.01144	1	CASTLE NUT