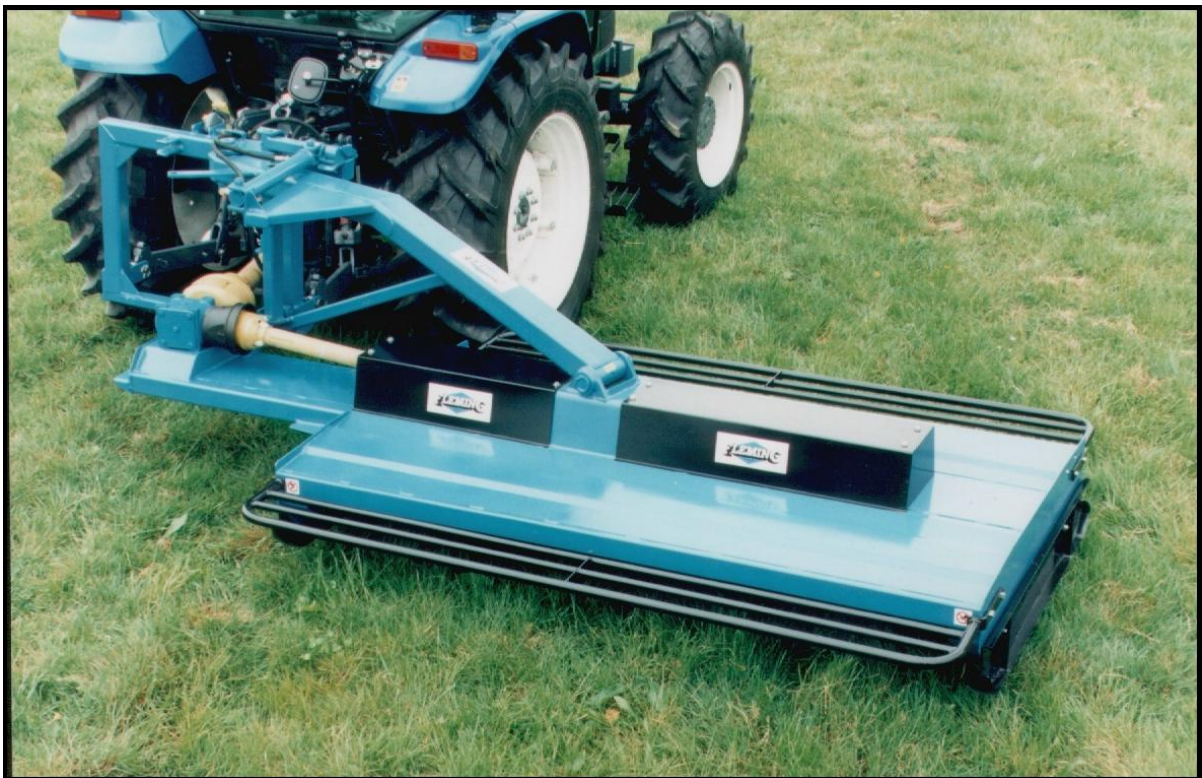
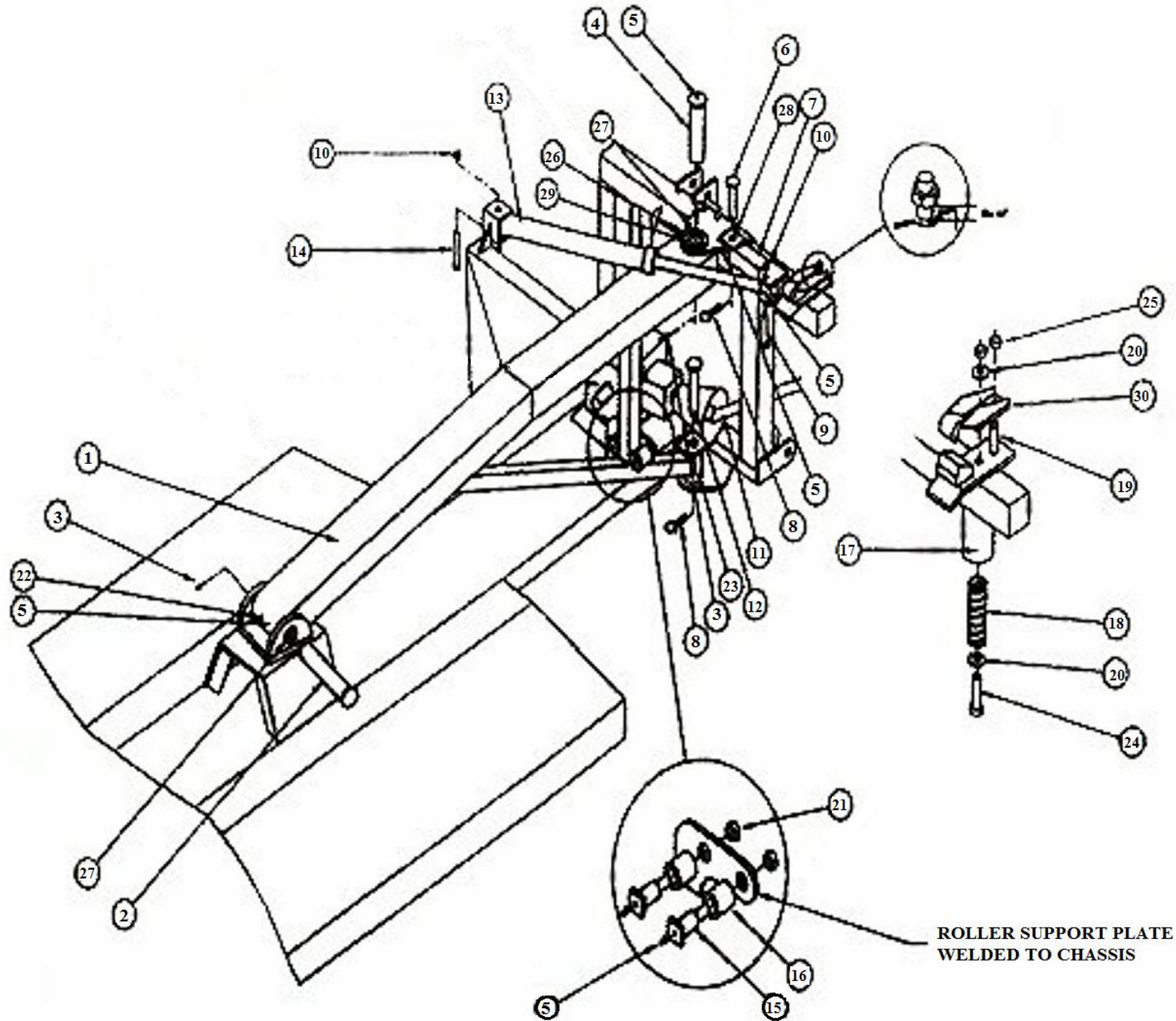


OLD STYLE TOP8SM GRASS TOPPER SPARE PARTS LIST



TOP8SM A FRAME ASSEMBLY

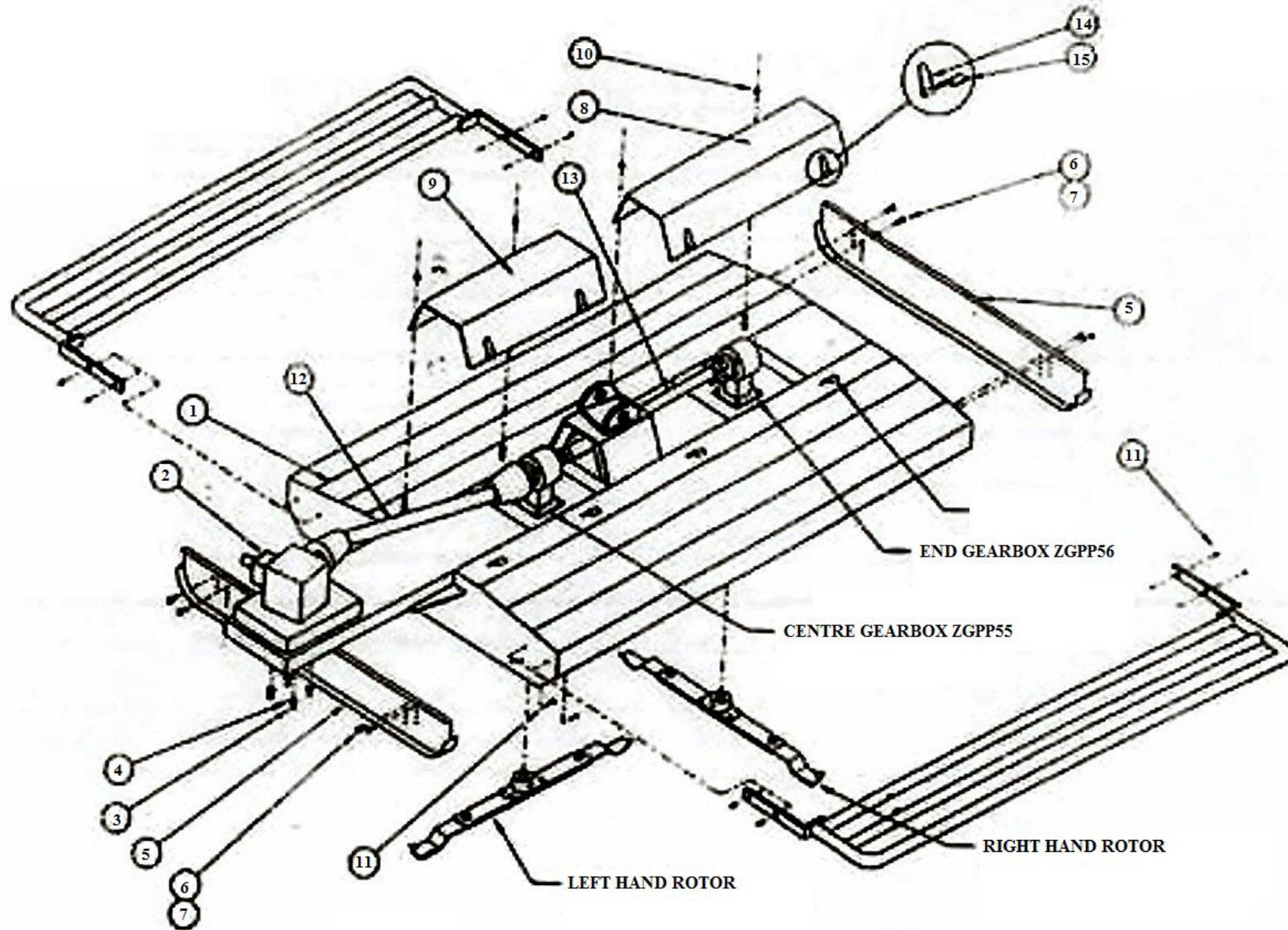


SEE TABLE NO: 001

TABLE NO: 001 TOP8SM TOPPER A FRAME ASSEMBLY

POS.	PART NO.	PCS.	DESCRIPTION:
1	TOPCNR302	1	CARRIER ARMS
2	TOPCNR184	1	LOCATION PIN
3	TOPCNR185	2	SPLIT PIN
4	TOPCNR186	1	LOCATION PIN
5	TOPCNR187	6	3 3/8" GREASE NIPPLE
6	TOPCNR188	1	LOCATION PIN
7	TOPCNR189	1	BREAKAWAY ARM
8	TOPCNR190	3	LINCH PIN
9	ZFAS83	1	M20x90 BOLT
10	ZFAS24	2	M20 NYLOCK COARSE
11	ZGPP91	1	PTO SHAFT
12	TOPCNR192	1	LOCATION PIN
13	TOPCNR01170	1	HYDRAULIC RAM
14	ZFAS38	1	M20x120 BOLT
15	TOPCNR193	2	ROLLER CLAMP
16	TOPCNR194	2	ROLLER
17	TOPCNR195	1	SPRING PIPE
18	TOPCNR196	1	SPRING
19	ZFAS82	2	M16x60 BOLT
20	ZFAS36	2	M16 WASHER ZP
21	TOPCNRBLT112	2	M20 NYLOCK FINE
22	TOPCNR303	1	BUSHING 80x50x160
23	TOPCNR304	1	BUSHING 50x25x100
24	TOPCNRBLT065	1	M16x180 BOLT
25	ZFAS23	1	M16 NYLOCK
26	TOPCNR199	1	BUSHING 80x50x110
27	TOPCNR200	1	BUSHING 80x25x20
28	TOPCNR201	4	BUSHING 50x25x65
29	TOPCNRBLT073	1	M20x90 BOLT
30	TOPCNR479	1	RELEASE ASSEMBLY

TOP8SM MAIN FRAME ASSEMBLY

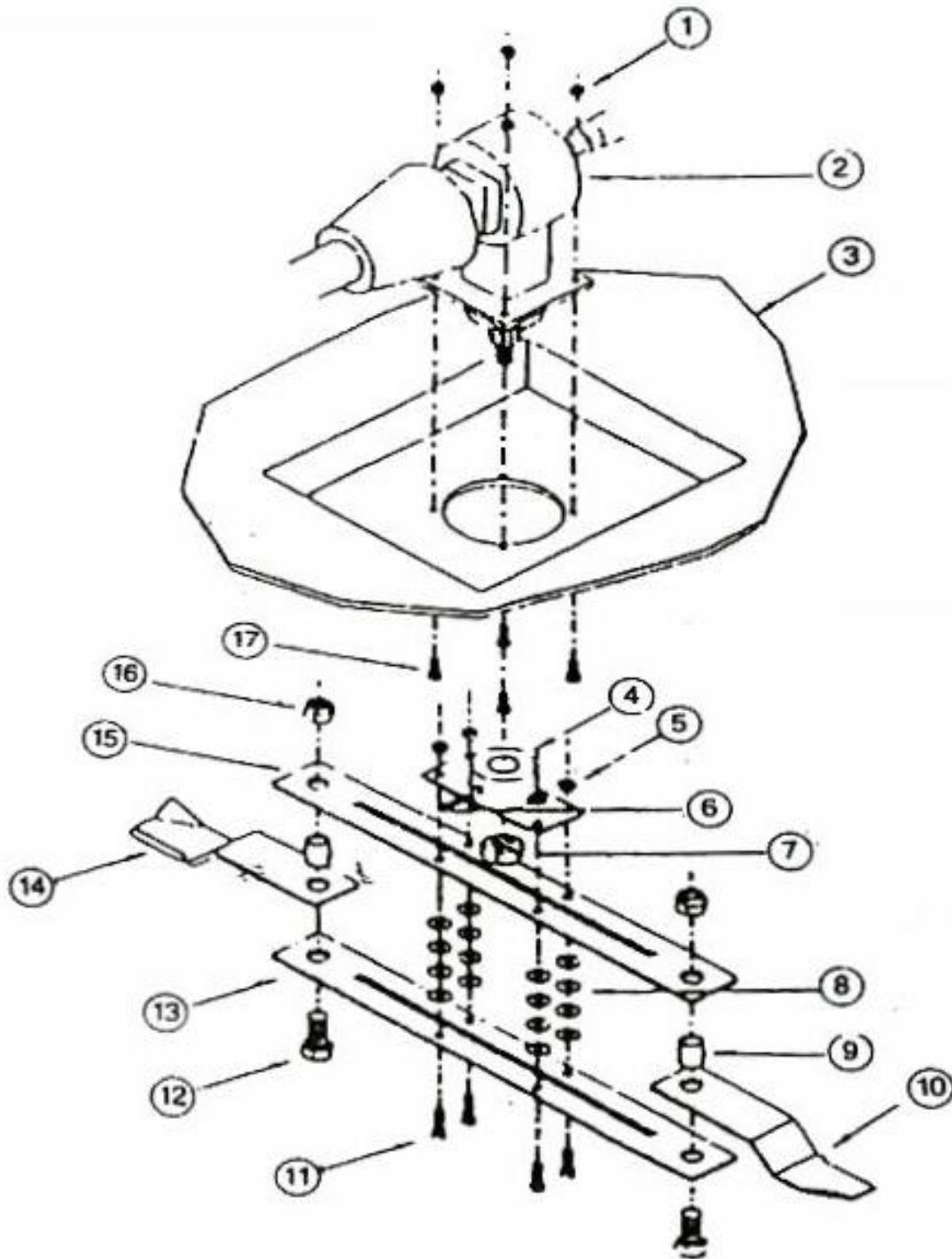


SEE TABLE NO: 002

TABLE NO: 002 TOP8SM TOPPER MAIN FRAME ASSEMBLY

POS.	PART NO.	PCS.	DESCRIPTION:
1	TOPCNR202	1	MAIN CHASSIS
2	ZGPP58	1	MAIN GEARBOX
3	ZFAS07	4	M10x30 SETSCREW
4	ZFAS03	4	M10 WASHER ZP
5	TOPCNR015	2	TOP8SM SKID
6	ZFAS10	2	M12x30 SETSCREW
7	ZFAS22	2	M12 NYLOCK NUT
8	TOPCNR204	1	BACK GEARBOX COVER
9	TOPCNR205	1	FRONT GEARBOX COVER
10	ZFAS07	4	M10x30 SETSCREW
11	ZFAS20	4	M10 NYLOCK NUT
12	ZGPP114	1	PTO SHAFT
13	TOPCNR00014	1	CONNECTING SHAFT 875mm
13	TOPCNR00235	1	CONNECTING SHAFT 715mm
14	TOPCNR208	4	BONNET HINGE
15	TOPCNR193	4	BONNET HINGE

TOP8SM FRONT LHD ROTOR



SEE TABLE NO: 003

TABLE NO: 003 TOP8SM FRONT LHD ROTOR

POS.	PART NO.	PCS.	DESCRIPTION:
1	ZFAS23	4	M16 NYLOCK NUT
2	ZGPP55	1	'T' SHAPED GEARBOX
3		1	MAIN FRAME
4	TOPCNR00050	1	CARRIER HOUSING BUSHING
5	ZFAS123	4	½" UNF NYLOCK NUT
6	ZFAS58	1	COTTER PIN
7	GBL.8.2.2.01144	1	CASTLE NUT
8	ZFAS45	16	M12 WASHER
9	ZGPP29	2	BLADE BUSH
10	ZGPP08	1	LHD TOPPER BLADE
11	ZFAS122	4	½" x 2" UNF BOLT
12	ZFAS37	2	M20x55 SETSCREW
13	TOPCNR00044	1	FLAIL CARRIER 720mm
14	ZGPP08	1	LHD TOPPER BLADE
15	TOPCNR00044	1	FLAIL CARRIER 720mm
16	ZFAS24	2	M20 NYLOCK
17	ZFAS11	4	M16X45 SETSCREW

TABLE NO: 004 TOP8SM TOPPER END RHD ROTOR

POS.	PART NO.	PCS.	DESCRIPTION:
1	ZGPP56	1	205.805 GEARBOX
2			MAIN FRAME
3	ZFAS11	4	M16X45 SETSCREW
4	ZFAS23	4	M16 NYLOCK NUT
5	ZGPP116	1	TRIPOD COUPLING
6	ZFAS47	6	M12X80 BOLT
7	ZFAS22	6	M12 NYLOCK NUT
8	ZFAS45	16	M12 WASHER
9	ZGPP82	1	RUBBER DOUGHNUT
10	TOPCNR00014	1	CONNECTING SHAFT
11	TOPCNR00044	2	FLAIL CARRIER 720mm
12	ZGPP09	2	RHD TOPPER BLADE
13	ZGPP29	2	BLADE BUSH
14	ZFAS37	2	M20x55 SETSCREW
15	ZFAS24	2	M20 NYLOCK
16	ZFAS122	4	½" x 2" UNF BOLT
17	ZFAS45	16	M12 WASHER
18	ZFAS123	4	½" UNF NYLOCK NUT
19	TOPCNR00050	1	CARRIER HOUSING BUSHING
20	ZFAS58	1	COTTER PIN
21	GBL.8.2.2.01144	1	CASTLE NUT