

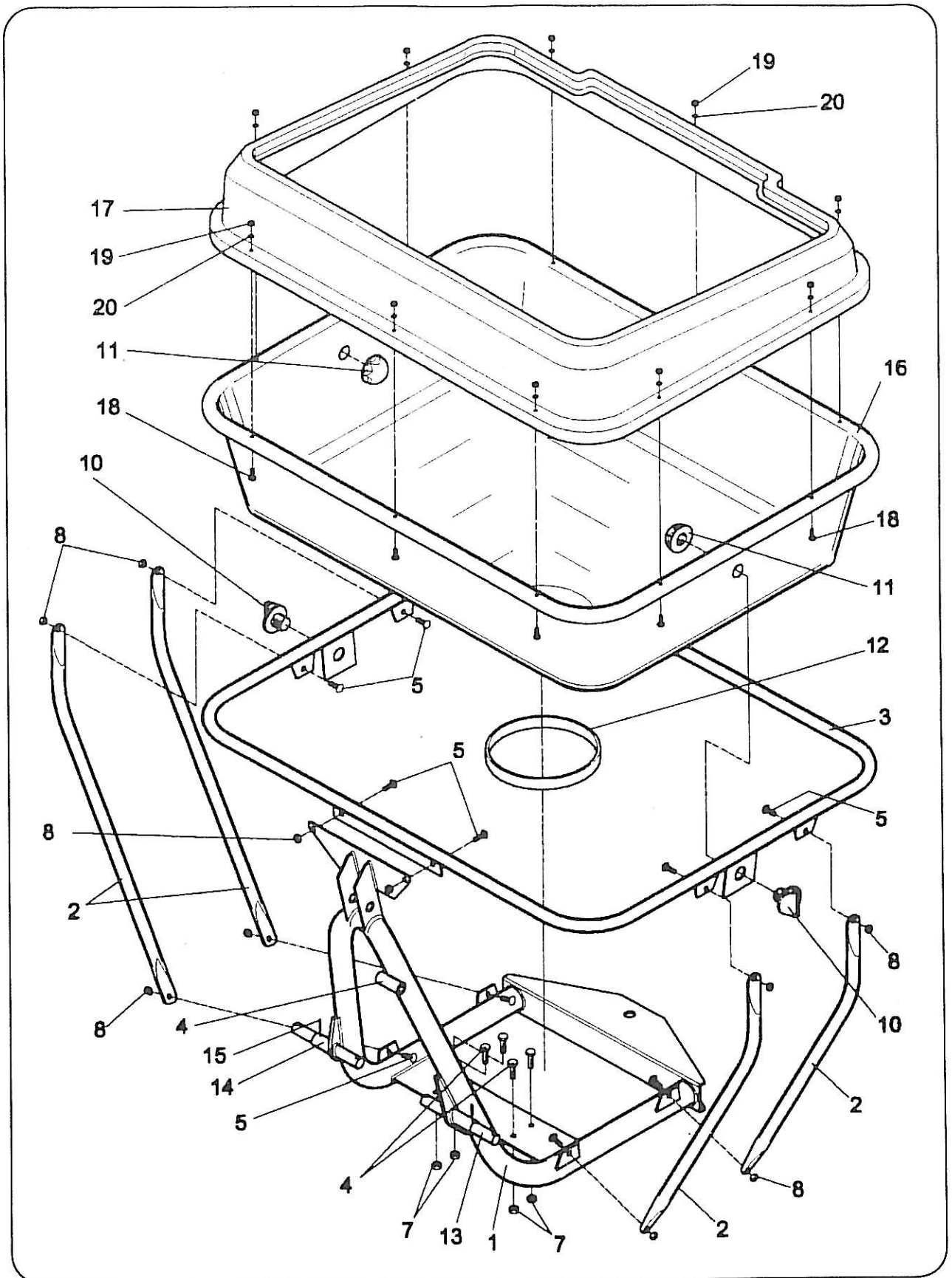
COSMO FSC WAGTAIL

PRE-2008

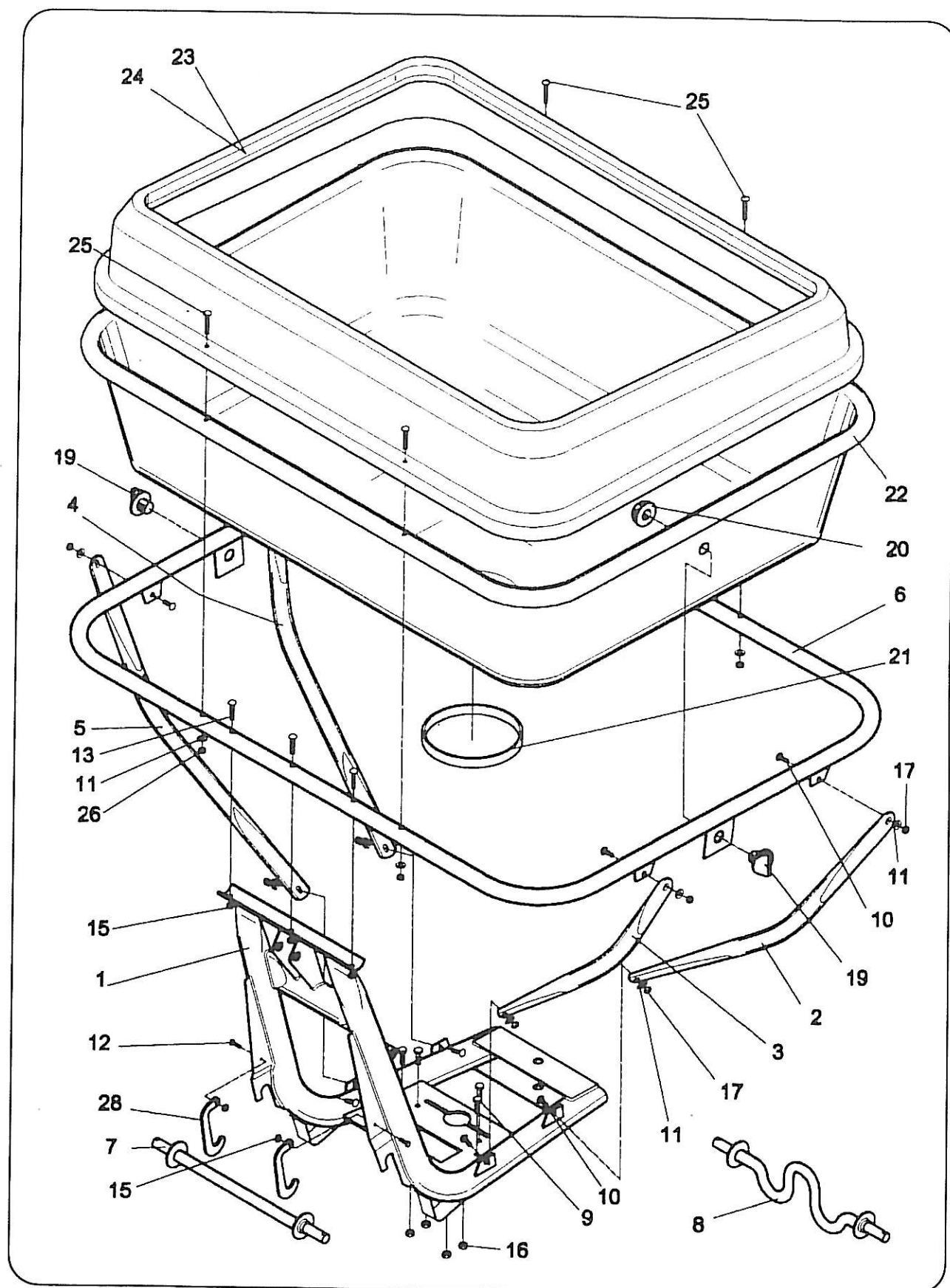
SPARE PARTS LIST



ADESIVI PENDOLARI / LABELS FOR PENDULAR SP. / ADHESIVES POUR PENDULAIRES / AUFKLEBER F. PENDELWERK					
CODICE	QT	ITALIANO	INGLESE	FRANCESE	TEDESCO
308.101	1	AD. COSMO GRANDE	BIG COSMO LABEL	GRAND ADHESIF COSMO	COSMO-AUFKLEBER GROSS
308.109	1	AD. ATTENZIONE CARDANO	LABEL FOR PTO SHAFT CARE	ADHESIF ATTENTION CARDAN	AUFKLEBER KARDANWELLE
308.141	2	AD. COSMO PICCOLO	SMALL COSMO LABEL	PETIT ADHESIF COSMO	COSMO-AUFKLEBER KLEIN
308.202	1	AD. SPANDIMENTO	SPREADING LABEL	ADHESIF EPANDAGE	AUFKLEBER STREUVORGANG
308.217	1	AD. GRADAZIONE LEVE PDN - PDSN	LEVER SCALE LABEL	ADHESIF GRADUATION DU LEVIER	AUFKLEBER HEBELSKALA PDN PDSN
308.218	1	AD. COSMO MADE IN ITALY	COSMO LABEL-MADE IN ITALY	ADHESIF COSMO-FABRIQUE' EN ITALIE	AUFKLEBER COSMO MADE EN ITALIE
308.132	1	AD. 400 BIANCO NUMERI ROSSI	WHITE LABEL 400 W/RED NOS.	ADHESIF 400 BLANC AVEC NOS. ROUGES	AUFKLEBER 400 WEISS MIT ROTEN ZAHLEN
308.133	1	AD. 500 BIANCO NUMERI ROSSI	WHITE LABEL 500 W/RED NOS.	ADHESIF 500 BLANC AVEC NOS. ROUGES	AUFKLEBER 500 WEISS MIT ROTEN ZAHLEN
308.185	1	AD. 600 BIANCO NUMERI ROSSI	WHITE LABEL 600 W/RED NOS.	ADHESIF 600 BLANC AVEC NOS. ROUGES	AUFKLEBER 600 WEISS MIT ROTEN ZAHLEN
308.186	1	AD. 800 BIANCO NUMERI ROSSI	WHITE LABEL 800 W/RED NOS.	ADHESIF 800 BLANC AVEC NOS. ROUGES	AUFKLEBER 800 WEISS MIT ROTEN ZAHLEN
308.187	1	AD. 1000 BIANCO NUMERI ROSSI	WHITE LABEL 1000 W/RED NOS.	ADHESIF 1000 BLANC AVEC NOS. ROUGES	AUFKLEBER 1000 WEISS MIT ROTEN ZAHLEN
308.191	1	AD. ATTENZIONE LIBRETTTO/CE	CE/OWNERS' MANUAL CARE	ADHESIF ATTENTION NOTICE D'ENTRETIEN/CE	AUFKLEBER "VORSICHT HANDBUCH/CE"
308.192	1	AD. ATTENZIONE ROTAZIONE/CE	CE/ROTATION CARE LABEL	ADHESIF ATTENTION ROULEMENT/CE	AUFKLEBER "VORSICHT DREHWERK/CE"
308.193	1	AD. CE	CE LABEL	ADHESIF CE	AUFKLEBER CE
308.201	1	AD. ATTENZ. APERTURA LAVORO/CE	WORKING CARE LABEL	ADHESIF ATTENTION TRAVAIL/CE	AUFKLEBER "VORSICHT ARBEITSÖFFNUNG/CE"

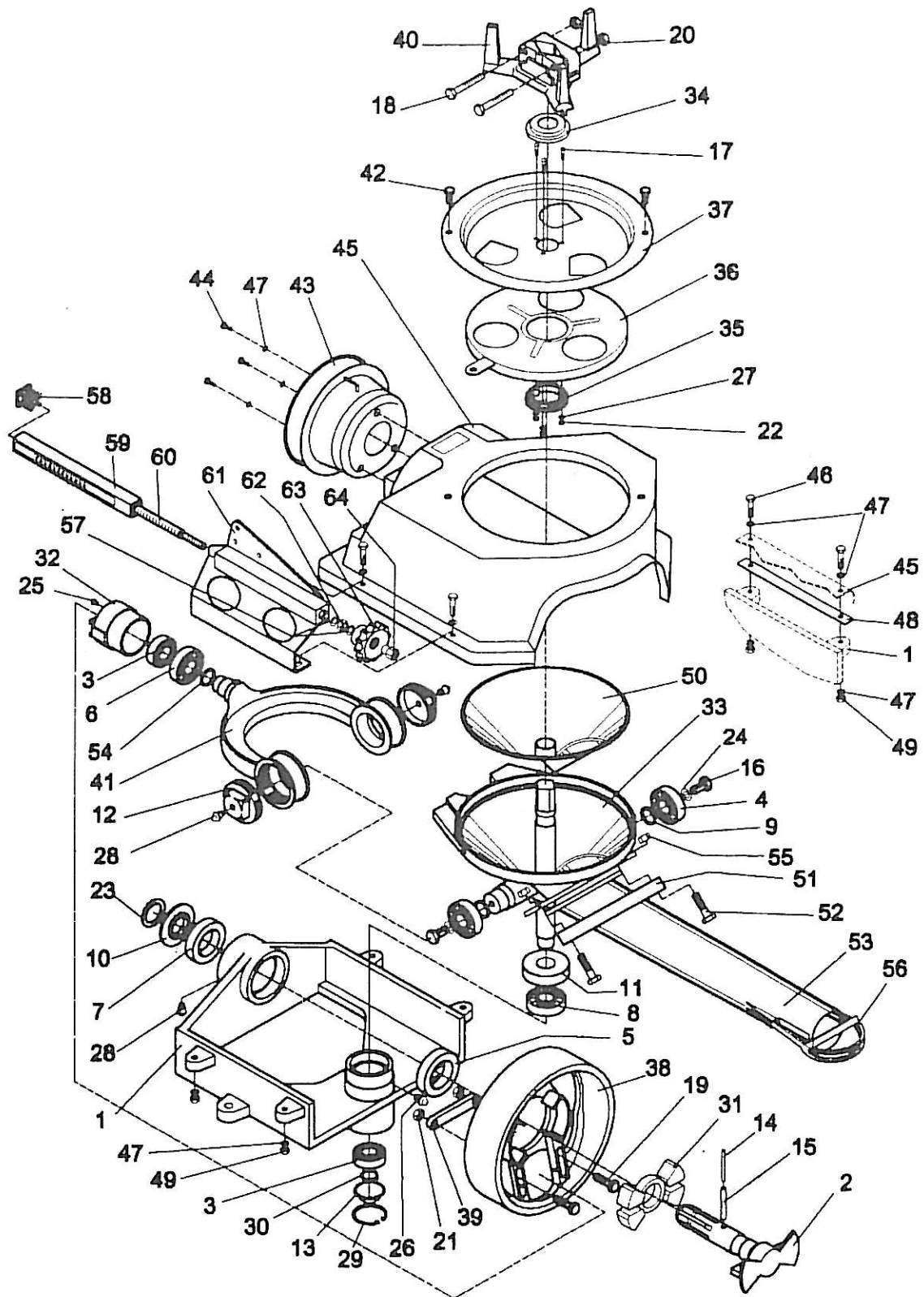


MODELLO PDN 400/500 TELAIO / PDN 400/500 MODEL FRAME / MODELE PDN 400/500 CHASSIS / MODELL PDN 400/500 RAHMEN									
CODICE	QT	REF.	ITALIANO	INGLESE		FRANCESE		TEDESCO	
613.012	1	1	TELAIO COMPLETO	COMPLETE FRAME		CHASSIS COMPLET		RAHMEN KOMPLETT	
602.007	4	2	BACCHETTA 400-500	ROD 400-500		BAGUETTE 400-500		STAB 400-500	
635.013	1	3	TUBO RETTANGOLARE SUPP. TRAMOGGIA	RECTANGULAR TUBE FOR HOPPER SUPPORT		TUBE RECTANGULAIRE POUR SUPPORT TREMIE		RECHTECKROHR TRICHTERHALTER	
300.052	4	4	VITE TE 12X40 UNI 5739	HEXAGONAL-HEAD SCREW 12X40		VIS TETE HEXAGONAL 12X40		SECHSKANTSCHRAUBE 12X40 UNI 5739	
300.044	10	5	VITE TT QST 10X30 Z UNI 5732	ROUND-HEAD SCREW 10X30		VIS TETE RONDE 10X30		SCHRAUBE TT QST 10X30 Z UNI 5732	
301.002	4	7	DADO M 12 NORMALE Z	NUT M12		ECROU M12		MUTTER M12 NORMAL Z	
301.010	10	8	DADO M 10 UNI 5588 Z	NUT M10		ECROU M10		MUTTER M10 UNI 5588 Z	
304.029	2	10	VITI IN PLASTICA	PLASTIC SCREW		VIS EN CAOUTCHOUC		KUNSTSTOFFSCHRAUBEN	
304.031	2	11	DADO IN PLASTICA	PLASTIC NUT		ECROU EN CAOUTCHOUC		KUNSTSTOFFMUTTER	
304.030	1	12	GUARNIZIONE IN GOMMA	PLASTIC GASKET		GARNITURE EN CAOUTCHOUC		GUMMI-DICHTUNG	
633.010	2	13	PERNI SOLLEVATORE	LIFT PIN		PIVOT ELEVATEUR		ZAPFEN HUBVORRICHTUNG	
325.010	2	14	BOCCOLE PERNI SOLLEVATORE	LIFT PIN BUSHING		BOITE POUR PIVOT ELEVATEUR		BUCHSEN HUBVORRICHTUNGSZAPFEN	
305.012	2	15	SPINE ELASTICHE	SPLIT PIN		GOUPILLE ELASTIQUE		GUMMISTIFTE	
609.022	1	16	TRAMOGGIA 400	HOPPER 400		TREMIE 400		TRICHTER 400	
609.019	1	17	RIALZO 500	EXTENSION 500		REHAUSSE 500		AUFSATZRAND 500	
300.048	10	18	VITE TTQST 8X25 Z	ROUND-HEAD SCREW 8X25		VIS TETE RONDE 8X25		SCHRAUBE TT QST 8X25 Z	
301.012	10	19	DADO M 8 Z UNI 5588	NUT M8		ECROU M8		MUTTER M 8 Z UNI 5588	
303.007	10	20	RONDELLA 8X18 Z	WASHER 8X18		RONDELLE 8X18		UNTERLEGSCHIBE 8X18 Z	



MODELLO PDSN 600/800/1000 TELAIO / PDSN 600/800/1000 MODEL FRAME / MODELE PDSN 600/800/1000 CHASSIS / MODELL PDSN 600/800/1000 RAHMEN									
CODICE	QT	REF.	ITALIANO		INGLESE		FRANCESE		TEDESCO
613.013	1	1	TELAIO COMPLETO		COMPLETE FRAME		CHASSIS COMPLET		RAHMEN KOMPLETT
602.008	2	2-4	BACCHETTA ANTERIORE		FRONT ROD		BAGUETTE ANTERIEURE		STAB VORNE
602.009	2	3-5	BACCHETTA POSTERIORE		BACK ROD		BAGUETTE POSTERIEURE		STAB HINTEN
635.014	1	6	TUBO RETTANGOLARE SUPP. TRAMOGGIA		RECTANGULAR TUBE FOR HOPPER SUPPORT		TUBE RECTANGULAIRE POUR SUPPORT TREMIE		RECHTECKROHR TRICHTERHALTER
637.001	1	7	BARRA SOLLEVAMENTO DIRITTA		RIGHT HOOK UP BAR		BARRE DE SOULEVEMENT DROITE		STANGE F.GERADEN HUB
637.002	1	8	BARRA SOLLEVAMENTO SAGOMATA		SHAPED HOOK UP BAR		BARRE DE SOULEVEMENT PROFILEE		STANGE F. GESCHWUNGENEN HUB
300.052	4	9	VITE TE 12X40 UNI 5739		HEXAGONAL-HEAD SCREW 12X40		VIS TETE EXAGONAL 12X40		SECHSKANTSCHRAUBE 12X40 UNI 5739
300.044	8	10	VITE TT QST 10X30 Z UNI 5732		ROUND-HEAD SCREW 10X30		VIS TETE RONDE 10X30		SCHRAUBE TT QST 10X30 Z UNI 5732
303.025	8	11	RONDELLA PIANA 10X30 Z		FLAT WASHER 10X30		RONDELLE PLATE 10X30		FLACHRING
300.017	2	12	VITE 10X35 UNI 5739 Z		SCREW 10X35		ECROU 10X35		SCHRAUBE 10X35 Z UNI 5739
300.051	3	13	VITE TTQST 10X60 Z		SCREW 10X60		ECROU 10X60		SCHRAUBE TT QST 10X60 Z
301.013	5	15	DADO METALBLOK M10		METALBLOK NUT M10		ECROU AUTOSERRAGE M 10		METALBLOCK-MUTTERN M10
301.002	4	16	DADO M 12 NORMALE Z		NUT M12		ECROU M12		MUTTER M 12 NORMAL Z
301.010	8	17	DADO M 10 UNI 5588 Z		NUT M10		ECROU M10		MUTTER M 10 UNI 5588 Z
304.029	2	19	VITI IN PLASTICA		PLASTIC SCREW		VIS EN CAOUTCHOUC		KUNSTSTOFFSCHRAUBEN
304.031	2	20	DADO IN PLASTICA		PLASTIC NUT		NUT EN CAOUTCHOUC		KUNSTSTOFFMUTTER
304.030	1	21	GUARNIZIONE IN GOMMA		PLASTIC GASKET		GARNITURE EN CAOUTCHOUC		GUMMI-DICHTUNGEN
609.023	1	22	TRAMOGGIA 600		HOPPER 600		TREMIE 600		TRICHTER 600
609.020	1	23	RIALZO 800		EXTENSION 800		REHAUSSE 800		AUFSATZRAND 800
609.021	1	24	RIALZO 1000		EXTENSION 1000		REHAUSSE 1000		AUFSATZRAND 1000
300.057	4	25	VITE TTQST 10X80 UNI 5732		SCREW 10X80		VIS 10X80		SCHRAUBE TT QST 10X80 UNI 5732
301.013	4	26	DADO METALBLOK 10		METALBLOK NUT M 10		ECROU AUTOSERRAGE M 10		METALBLOCK-MUTTERN M 10
634.001	2	28	GANGI ATTACCO		CONNECTION HOOK		CROCHET DE FIXATION		KUPPLUNGSHAKEN

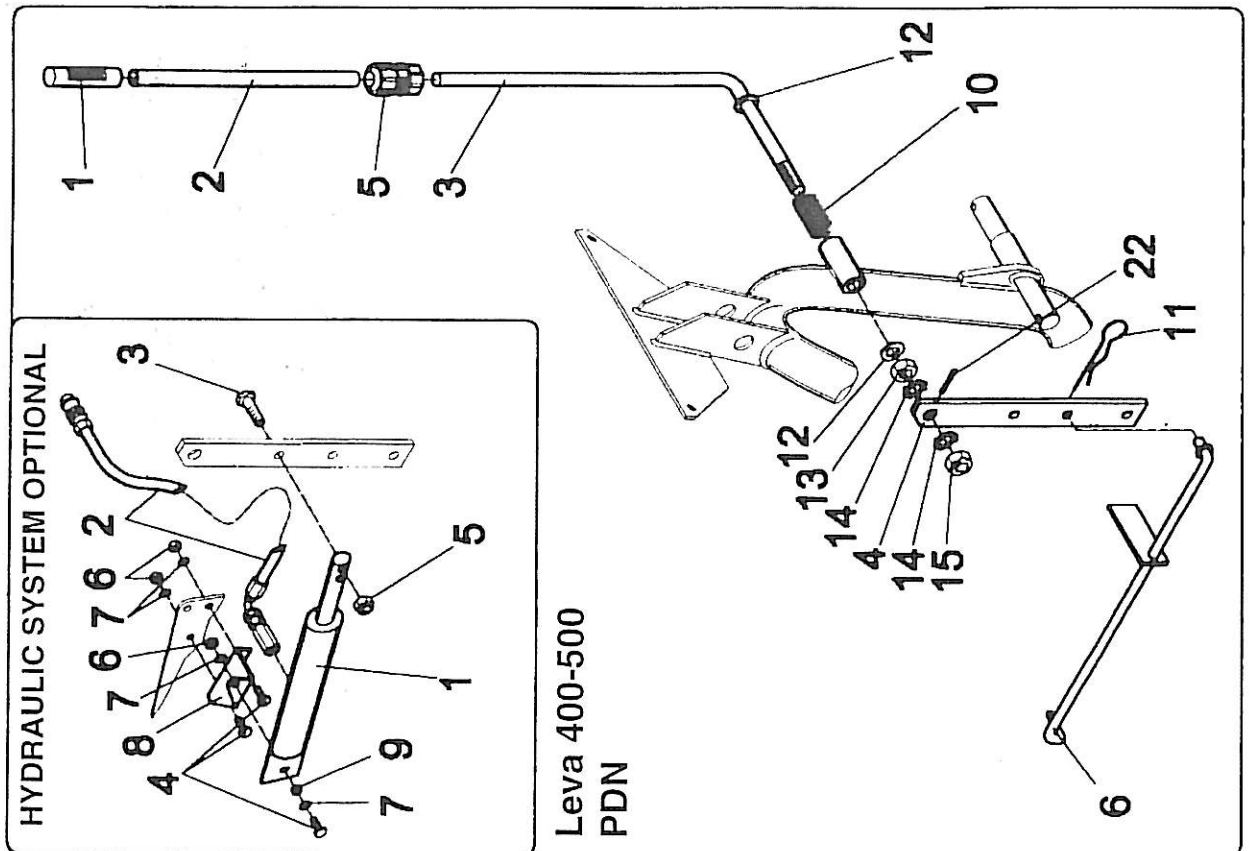
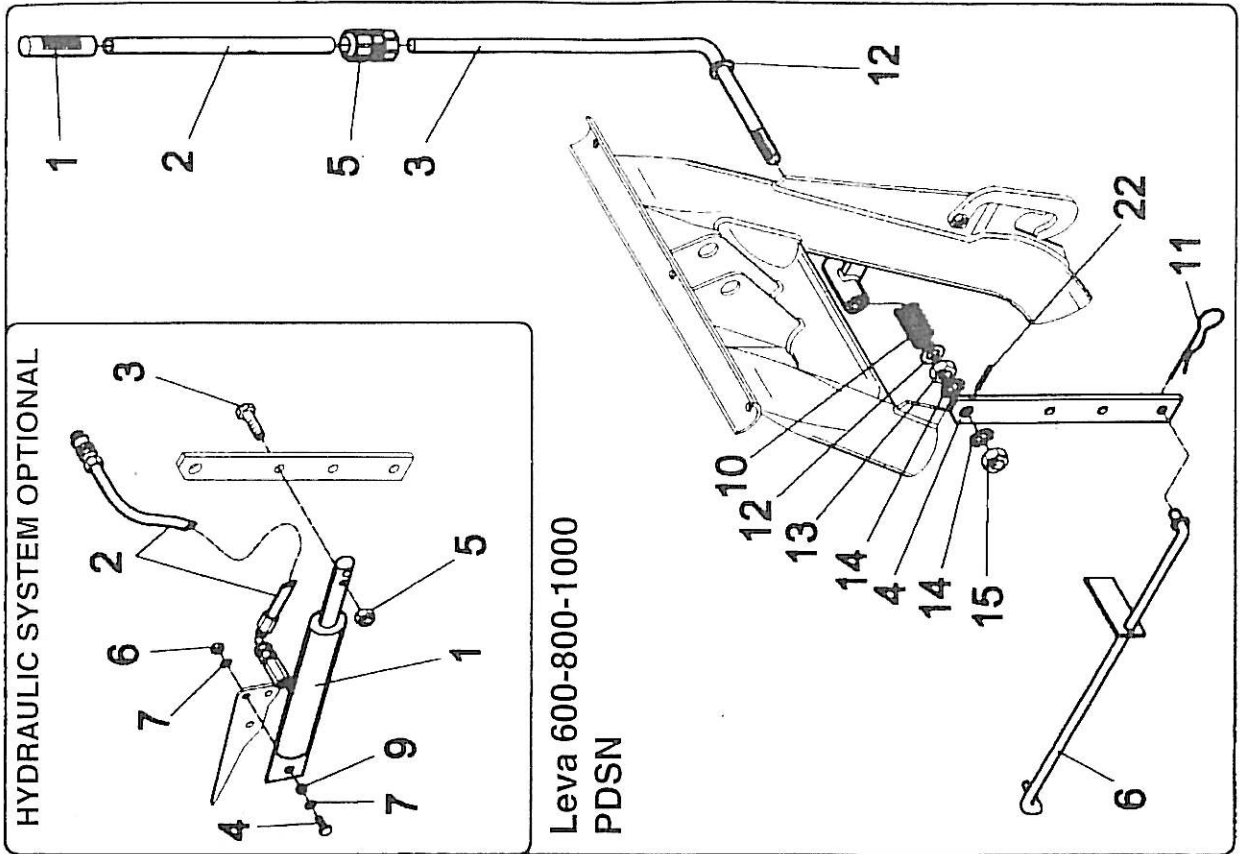
RIDUTTORE / GEAR BOX / BOITIER / GETRIEBE



RIDUTTORE - GEAR BOX

CODICE	QT.	REF.	ITALIANO	INGLESE
322.006			RIDUTTORE	GEAR BOX
321.001	1	1	CORPO RIDUTTORE	GEAR BOX BODY
323.012	1	2	ALBERO DI ENTRATA	INPUT SHAFT
310.006	2	3	CUSCINETTO 6205	BALL BEARING
310.007	2	4	CUSCINETTO 6206	BALL BEARING
310.008	1	5	CUSCINETTO 6010Z	BALL BEARING
310.009	1	6	CUSCINETTO 6006	BALL BEARING
310.010	1	7	CUSCINETTO 6009 RS	BALL BEARING
310.011	1	8	CUSCINETTO 6206 Z	BALL BEARING
304.035	3	9	SPESSORE	SHIM
299.001	1	10	PARAPOLVERE ALBERO ENTRATA	DUST COVER FOR INPUT SHAFT
299.002	1	11	PARAPOLVERE INFERIORE	LOWER DUST COVER
299.003	1	12	PARAPOLVERE FORCELLA	DUST COVER FOR FORK
299.004	1	13	PARAPOLVERE INFERIORE SOTTO	BOTTOM DUST COVER
305.013	1	14	SPINA ELASTICA 5X60	SPLIT PIN 5X60
305.014	1	15	SPINA ELASTICA 8X60	SPLIT PIN 8X60
300.053	2	16	VITE 12X25 FISSAGGIO FORCELLA	SCREW 12X25 FIXING FORK
300.054	3	17	VITE 5X25 FISSAGGIO ANELLO A DISCO	SCREW 5X25 FIXING DISC RING
300.055	2	18	VITE 12X60 CHIUDI AGITATORE	SCREW 12X60 STOPPING AGITATOR
300.056	2	19	VITE 10X37 FISSAGGIO VOLANO	SCREW 10X37 FIXING STEERING WHEEL
301.002	2	20	DADO M12	NUT M12
301.010	2	21	DADO M10	NUT M10
301.011	3	22	DADO M5 AUTOBL.	SELF LOCK NUT M5
303.027	1	23	RONDELLA ALBERO ENTRATA	INPUT SHAFT WASHER
303.028	2	24	RONDELLA FORCELLA DIAM.12	FORK WASHER
306.003	1	25	INGRASSATORE M6	GREASE NIPPLE M6
306.004	1	26	INGRASSATORE M10	GREASE NIPPLE M10
306.005	3	27	RONDELLA (GLOWER) DIAM.5	WASHER (GLOXER)
306.006	3	28	INGRASSATORE M10 45°	GREASE NIPPLE M10 45°
313.014	1	29	ANELLO TENUTA 52 MM	RING 52MM
313.015	1	30	ANELLO TENUTA 25 MM	RING 25MM
327.001	1	31	AMMORTIZZATORE IN GOMMA	SHOCK ABSORBER
304.003	1	32	CUFFIA	COVER
600.001	1	33	CONO IN FERRO	IRON CONE
304.004	1	34	ANELLO IN GOMMA SUPERIORE	UPPER RUBBER RING
304.005	1	35	ANELLO IN GOMMA INFERIORE	LOWER RUBBER RING
610.007	1	36	DISCO INOX INFERIORE	LOWER STAINLESS DISC
610.008	1	37	DISCO INOX SUPERIORE	UPPER STAINLESS DISC
599.001	1	38	VOLANO	FLYWHEEL
315.001	1	39	PLACCHETTA REGOLAZIONE	BLOCKING SHAFT
619.006	1	40	AGITATORE INFERIORE PDN - PDSN	LOWER AGITATOR
332.001	1	41	FORCELLA	FORK
300.029	2	42	VITI FISSAGGIO DISCHI 8X20	SCREW FIXING DISCS 8X20
304.006	1	43	CUFFIA PROT. CARDANO	INPUT SHAFT COVER
300.026	3	44	VITI FISSAGGIO CUFFIA TE6X16	SCREW FIXING COVERS 6X16
304.034	1	45	SCATOLA PROTEZIONE RIDUTTORE	PROTECTION COVER FOR GEAR BOX
300.001	4	46	VITI FISSAGGIO SCATOLA PROTEZIONE 8X35	SCREW FIXING PROTECTION COVER
303.007	8	47	RONDELLA 8X17	WASHER 8X17
606.014	2	48	LAMA 2 FORI 20X3	BLADE 2 HOLES
301.012	4	49	DADO M8	NUT M8
600.002	1	50	CONO IN PLASTICA	PLASTIC CONE
304.025	1	51	FLANGIA AL PENDOLO	ALUMINIUM FLANGE
300.045	2	52	VITE FISSAGGIO PENDOLO 12X50	SCREW FIXING PENDULUM
304.024	1	53	PENDOLO (EX 9-58) COMPLETO	COMPLETE PENDULUM (EX 9-58)
329.012	1	54	DISTANZIALE	SPACER
301.008	2	55	DADO AUTOBL. M12	SELF LOCK NUT M12
304.027	1	56	PARTE TERMINALE PENDOLO	PENDULUM END
303.009	2	57	RONDELLA PIANA 10,5X21	WASHER 10,5X21
612.002	1	58	PUNTALE QUADRO interno 25X25	SQUARE METAL TIP
635.015	1	59	COMPLESSIVO TUBO INTERNO-5000102	INNER TUBE ASSY.
633.011	1	60	PERNO FILETTATO X REGOLAZIONE-5330102	THREADED PIN FOR ADJUSTMENT
603.029	1	61	COMPLESSIVO SUPP.MARTINETTO E ATTACCO PISTONE 5000104	SUPPORT JACK ASSY. AND PISTON JOINT
325.011	1	62	DISTANZIALE PER VITE-5530101	SPACER FOR SCREW
302.004	1	63	VOLANTINO diam.70 con boccola filettata M10	WHEEL WITH THREADED BUSHING
301.030	1	64	DADO SPECIALE per BLOCCAGGIO 5330101	SPECIAL LOCK NUT

BOITIER - GETRIEBE				
CODICE	QT.	REF.	FRANCESE	TEDESCO
322.006			BOITIER	GETRIEBE
321.001	1	1	CORPS DU BOITIER	GETRIEBEKASTEN
323.012	1	2	ARBRE D'ENTREE	ANTRIEBSWELLE
310.006	2	3	ROULEMENT A BILLES	LAGER 6205
310.007	2	4	ROULEMENT A BILLES	LAGER 6206
310.008	1	5	ROULEMENT A BILLES	LAGER 6010Z
310.009	1	6	ROULEMENT A BILLES	LAGER 6006
310.010	1	7	ROULEMENT A BILLES	LAGER 6009RS
310.011	1	8	ROULEMENT A BILLES	LAGER 6206Z
304.035	3	9	EPAISSEUR	DISTANZSTÜCK
299.001	1	10	GARDE-POUDRE ARBRE D'ENTREE	STAUBSCHUTZ ANTRIEBSWELLE
299.002	1	11	GARDE-POUDRE INFERIEUR	UNTERER STAUBSCHUTZ
299.003	1	12	GARDE-POUDRE POUR FOURCHE	GABEL-STAUBSCHUTZ
299.004	1	13	GARDE-POUDRE INFERIEUR	UNTERER STAUBSCHUTZ UNTEN
305.013	1	14	GOUPILLE ELASTIQUE 5X60	GUMMISTIFT 5X60
305.014	1	15	GOUPILLE ELASTIQUE 8X60	GUMMISTIFT 8X60
300.053	2	16	VIS 12X25 FIXAGE FOURCHE	GABELSTELLSCHRAUBE 12X25
300.054	3	17	VIS 5X25 FIXAGE BAGUE A DISQUE	STELLSCHRAUBE 5X25 RINGSCHLEIBE
300.055	2	18	VIS 12X60 QUI FERME L'AGITATEUR	RÜHRWERK-VERSCHLUSSSCHRAUBE 12X60
300.056	2	19	VIS 10X37 FIXAGE VOLANT	SCHWUNGRAD-STELLSCHRAUBE 10X37
301.002	2	20	ECROU M12	MUTTER M12
301.010	2	21	ECROU M10	MUTTER M10
301.011	3	22	ECROU AUTOSERRAGE M5	SELBSTSICHERNDE MUTTER M5
303.027	1	23	RONDELLE POUR ARBRE D'ENTREE	UNTERLEGSCHLEIBE ANTRIEBSWELLE
303.028	2	24	RONDELLE POUR FOURCHE	UNTERLEGSCHLEIBE GABEL DURCHM.12
306.003	1	25	GRAISSEUR M6	SCHMIERBÜCHSE M6
306.004	1	26	GRAISSEUR M10	SCHMIERBÜCHSE M10
306.005	3	27	RONDELLE (GLOWER) Ø 5	UNTERLEGSCHLEIBE (GLOWER) DURCHM. 5
306.006	3	28	GRAISSEUR M10	SCHMIERBÜCHSE M10 45°
313.014	1	29	BAGUE 52 MM	DICHTRING 52 MM
313.015	1	30	BAGUE 25 MM	DICHTRING 25 MM
327.001	1	31	AMORTISSEUR	GUMMIPUFFER
304.003	1	32	PROTECTION	HAUBE
600.001	1	33	CONE EN FER	EISENKEGEL
304.004	1	34	BAGUE EN CAOUTCHOUC SUPERIEUR	GUMMRING OBEN
304.005	1	35	BAGUE EN CAOUTCHOUC INFERIEUR	GUMMRING UNTEN
610.007	1	36	DISQUE INOX INFERIEUR	NIROSTASCHLEIBE OBEN
610.008	1	37	DISQUE INOX SUPERIEUR	NIROSTASCHLEIBE UNTEN
599.001	1	38	VOLANT	SCHWUNGRAD
315.001	1	39	BLOCAGE ARBRE	WELLENGESPERRE
619.006	1	40	AGITATEUR INFERIEUR	UNTERES RÜHRWERK PDN - PDSN
332.001	1	41	FOURCHE	GABEL
300.029	2	42	VIS QUI FERME LES DISQUES 8X20	STELLSCHRAUBEN SCHLEIBE 8X20
304.006	1	43	PROTECTION POUR ARBRE D'ENTREE	KARDANWELLENHAUBE
300.026	3	44	VIS FIXAGE PROTECTION 6X16	STELLSCHRAUBEN HAUBE TE6X16
304.034	1	45	PROTECTION POUR BOITIER	GETRIEBEKASTEN
300.001	4	46	VIS FIXAGE PROTECTION	STELLSCHRAUBEN SCHUTZKASTEN 8X35
303.007	8	47	RONDELLE 8X17	UNTER LEGSCHLEIBE 8X17
606.014	2	48	LAMES 2 TROUS	MESSER 2 LÖCHER 20X3
301.012	4	49	ECROU M8	MUTTER M8
600.002	1	50	CONE EN CAOUTCHOUC	KUNSTSTOFFKEGEL
304.025	1	51	FLANGE EN ALUMINIUM	ALU-FLANSCH PENDEL
300.045	2	52	VIS FIXAGE PENDULE	STELLSCHRAUBE PENDEL 12X50
304.024	1	53	PENDULE COMPLET (EX 9 - 58)	KOMPLETTER PENDEL (EX 9 - 58)
329.012	1	54	ENTRETOISE	DISTANZSTÜCK
301.008	2	55	ECROU AUTOSERRAGE M12	SELBSTSICHERNDE MUTTER M12
304.027	1	56	BOUT DU PENDULE	PENDEL-SCHWANZSTÜCK
303.009	2	57	RONDELLE 10,5X21	FLACHRING 10,5X21
612.002	1	58	EMBOUT CARRE	STÖSSELSCHAFT VIERECKIG 25X25
635.015	1	59	TUYAU INTERNE	INNENROHRSATZ 5000102
633.011	1	60	PIVOT FILETE' POUR REGLAGE	GEWINDEBOLZEN ZUM REGELN 5330102
603.029	1	61	SUPPORT VERIN ET ATTACHE PISTON	WINDENHALTER UND KOLBENANSCHLUSS-GRUPPE 5000104
325.011	1	62	ENTRETOISE POUR VIS	DISTANZSTÜCK F. SCHRAUBEN 5530101
302.004	1	63	VOLANT AVEC BOITE FILETEE	HANDRAD DURCHM. 70 MIT GEWINDEBÜCHSE M10
301.030	1	64	ECROU SPECIAL POUR FIXAGE	SPEZIALMUTTER ZUR BLOCKIERUNG 5330101



PDN 400/500 PDSN 600/800/1000 LEVA DI APERTURA - PDN 400/500 PDSN 600/800/1000 OPENING LEVER

CODICE	QT.	REF.	ITALIANO	INGLESE
618.009	1		LEVA COMPLETA	COMPLETE LEVER
304.009	1	1	IMPUGNATURA IN GOMMA PER LEVA	RUBBER GRIP FOR LEVER
635.008	1	2	PROLUNGA IN TUBO MM 20 INT MM 17	EXTENSION TUBE MM 20
602.006	1	3	TIRANTE MM 16	TIE ROD
606.013	1	4	LAMA 40X80	BLADE 40X80
304.032	1	5	REGISTRO IN PLASTICA LEVA	RUBBER REGISTER FOR LEVER
602.012	1	6	TIRANTE NUOVO LEVA PD 400/ 600	THREADED TIE ROD MM 12
617.003	1	10	MOLLA	SPRING
305.008	1	11	SPINA ELASTICA R 3	SPLIT PIN
303.021	2	12	RONDELLA PIANA 16X30X3	FLAT WASHER 16X30X3
301.024	1	13	DADO M 16 NORMALE	NUT M 16
303.024	2	14	RONDELLA (GROWER) DENT.16X26 GREZ.	TOOTHED WASHER 16X26
301.018	1	15	DADO AUTOB 16 UNI 6104	SELF LOCK NUT 16
305.003	1	22	SPINA ELASTICA 5X40	SPLIT PIN 5X40

MODEL PDN 400/500 APERTURA IDRAULICA - HYDRAULIC OPENING

CODICE	QT.	REF.	ITALIANO	INGLESE
619.008	1		APERTURA IDRAULICA COMPLETA	COMPLETE HYDRAULIC SYSTEM
623.005	1	1	CILINDRO IDRAULICO	HYDRAULIC CYLINDER
304.023	1	2	TUBO IDRAULICO nuovo C/ VALVOLA	NEW HYDRAULIC TUBE C/ VALVE
300.052	1	3	VITE TE 12X40 Z	HEXAGONAL-HEAD SCREW 12X40
300.029	3	4	VITE TE 8X20 Z	HEXAGONAL-HEAD SCREW 8X20
301.008	1	5	DADO AUTOBL. M 12	SELF LOCK NUT M 12
301.001	3	6	DADO AUTOBL. M 8	SELF LOCK NUT M 8
303.007	4	7	RONDELLA 8X18 Z	WASHER 8X18
606.015	1	8	PIASTRA PER ATTACCO PISTONE	PLATE FOR PISTON CONNECTION
325.012	1	9	BOCCOLINA 13X8X7	LITTLE BUSHING 13X8X7

MODEL PDSN 600/800/1000 APERTURA IDRAULICA - HYDRAULIC OPENING

CODICE	QT.	REF.	ITALIANO	INGLESE
619.009	1		APERTURA IDRAULICA COMPLETA	COMPLETE HYDRAULIC SYSTEM
623.005	1	1	CILINDRO IDRAULICO	HYDRAULIC CYLINDER
304.023	1	2	TUBO IDRAULICO nuovo C/ VALVOLA	NEW HYDRAULIC TUBE C/ W VALVE
300.052	1	3	VITE TE 12X40 Z	HEXAGONAL-HEAD SCREW 12X40
300.029	1	4	VITE TE 8X20 Z	HEXAGONAL-HEAD SCREW 8X20
301.008	1	5	DADO AUTOBL. M 12	SELF LOCK NUT M 12
301.001	1	6	DADO AUTOBL. M 8	SELF LOCK NUT M 8
303.007	2	7	RONDELLA 8X18 Z	WASHER 8X18
325.012	1	9	BOCCOLINA 13X8X7	LITTLE BUSHING

PDN 400/500 PDSN 600/800/1000 LEVIER D'OUVERTURE - PDN 400/500 PDSN 600/800/1000 HEBELWEITE

CODICE	QT.	REF.	FRANCESE	TEDESCO
618.009	1		LEVIER COMPLET	KOMPLETTER HEBEL
304.009	1	1	POIGNEE EN CAOUTCHOUC POUR LEVIER	GUMMIGRIF F. HEBEL
635.008	1	2	RALLONGE EN TUBE	VERLÄNGERUNGSRÖHR 20 MM INNEN 17 MM
602.006	1	3	TIRANT	ZUGSTANGE 16 MM
606.013	1	4	LAME 40X80	MESSER 40X80
304.032	1	5	REGULATION DU LEVIER EN CAOUTCHOUC	KUNSTSTOFFREGISTER F. HEBEL
602.012	1	6	TIRANT FILETE' MM 12	NEUE ZUGSTANGE HEBEL PDN 400 PDSN 600
617.003	1	10	RESSORT	FEDER
305.008	1	11	GOUPILLE ELASTIQUE	GUMMISTIFTE R3
303.021	2	12	RONDELLE PLATE 16X30X6	FLACHRING 16X30X3
301.024	1	13	ECROU M 16	MUTTER M16 NORMAL
303.024	2	14	RONDELLE DENTELEE 16X26	GROVERRING GEZAHNT 16X26 UNBEARBEITET
301.018	1	15	ECROU AUTOSERRAGE	SELBSTSICHERNDE MUTTER 16 UNI 6104
305.003	1	22	GOUPILLE ELASTIQUE 5X40	GUMMISTIFT 5X40

MODEL PDN 400/500 OUVERTURE HYDRAULIQUE - HYDRAULIKÖFF

CODICE	QT.	REF.	FRANCESE	TEDESCO
619.008	1		OUVERTURE HYDRAULIQUE COMPLETE	KOMPLETTE HYDRAULIKÖFFNUNG
623.005	1	1	CILINDRE HYDRAULIQUE	HYDRAULIKZYLINDER
304.023	1	2	TUBE HYDRAULIQUE AVEC SOUPAPE	HYDRAULIKROHR NEU M. VENTIL
300.052	1	3	VIS TETE HEXAGONAL 12X40	SECHSKANTSCHRAUBE 12X40 Z
300.029	3	4	VIS TETE HEXAGONAL 8X20	SECHSKANTSCHRAUBE 8X20 Z
301.008	1	5	ECROU AUTOSERRAGE M 12	SELBSTSICHERNDE MUTTER M 12
301.001	3	6	ECROU AUTOSERRAGE M 8	SELBSTSICHERNDE MUTTER M 8
303.007	4	7	RONDELLE 8X18	UNTERLEGSCHIEBE 8X18 Z
606.015	1	8	PLAQUE POUR L'ATTELAGE DU PISTON	PLATTE M. KOLBENANSCHLUSS
325.012	1	9	PETITE BOITE 13X8X7	KLEINE BUCHSE 13X8X7

MODEL PDSN 600/800/1000 OUVERTURE HYDRAULIQUE - HYDRAULIKÖFF

CODICE	QT.	REF.	FRANCESE	TEDESCO
619.009	1		OUVERTURE HYDRAULIQUE COMPLETE	KOMPLETTE HYDRAULIKÖFFNUNG
623.005	1	1	CILINDRE HYDRAULIQUE	HYDRAULIKZYLINDER
304.023	1	2	TUBE HYDRAULIQUE AVEC SOUPAPE	HYDRAULIKROHR NEU M. VENTIL
300.052	1	3	VIS TETE HEXAGONAL 12X40	SECHSKANTSCHRAUBE 12X40 Z
300.029	1	4	VIS TETE HEXAGONAL 8X20	SECHSKANTSCHRAUBE 8X20 Z
301.008	1	5	ECROU AUTOSERRAGE M 12	SELBSTSICHERNDE MUTTER M 12
301.001	1	6	ECROU AUTOSERRAGE M 8	SELBSTSICHERNDE MUTTER M 8
303.007	2	7	RONDELLE 8X18	UNTERLEGSCHIEBE 8X18 Z
325.012	1	9	PETITE BOITE	KLEINE BUCHSE 13X8X7