

AGRICULTURAL MACHINERY  
**sitrex**®  
Spa

***SPARE PARTS LIST  
ASSEMBLY  
USE AND MAINTENANCE***

***FS SPREADER***

## 15 ACCESSORIES

The fertilizer-spreader can be equipped with the following accessories:

- Articulated agitator kit for powder fertilizers (Fig.12)
- Mechanic remote control (Fig.13)
- Deflector for salt/sand (Fig.14)
- Single fertilizer conveyor (Fig.15)
- Dual fertilizer conveyor (Fig.16)

### ARTICULATED AGITATOR KIT FOR POWDER FERTILIZERS

This accessory together with the agitator permits the spreading of powder or damp fertilizers; its function is to keep the fertilizer flowing down into the discharging hole.

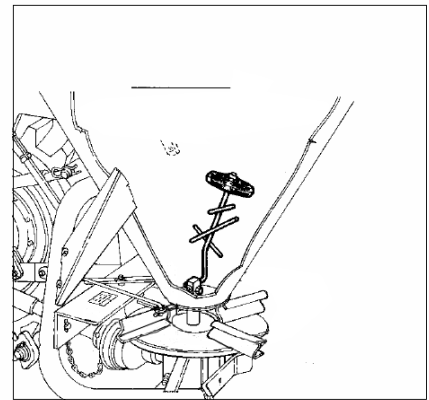


Fig.12

### MECHANIC REMOTE CONTROL

Supplied on request. It consists of a 2.5 m extension containing a steel wire that, connected to the adjustment lever makes the adjustment possible from the tractor seat, so as to assure a safe and handy work.

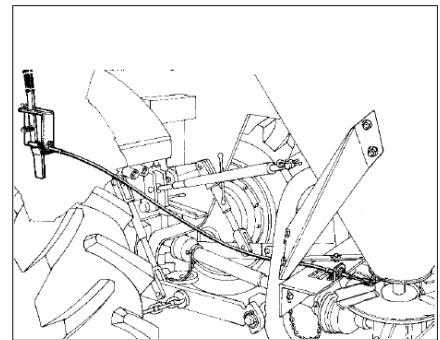


Fig.13

### DEFLECTOR FOR SALT/SAND

It consists of a section of a steel cone and of two adjustable lateral supports; with this accessory the product is spread in the area right below the hopper.

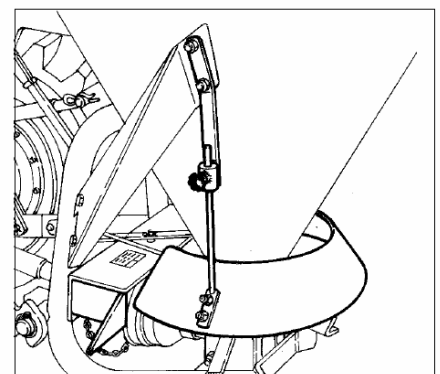
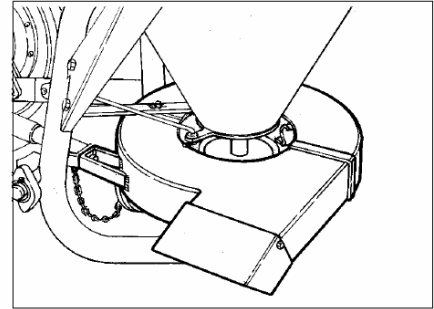


Fig.14

## SINGLE FERTILIZER CONVEYOR

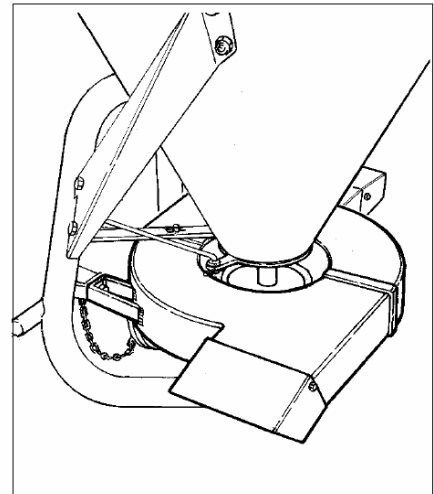
It consists of 2 steel hulls that cover the spreading disc and allows a precise and localized distribution.



**Fig.15**

## DUAL FERTILIZER CONVEYOR

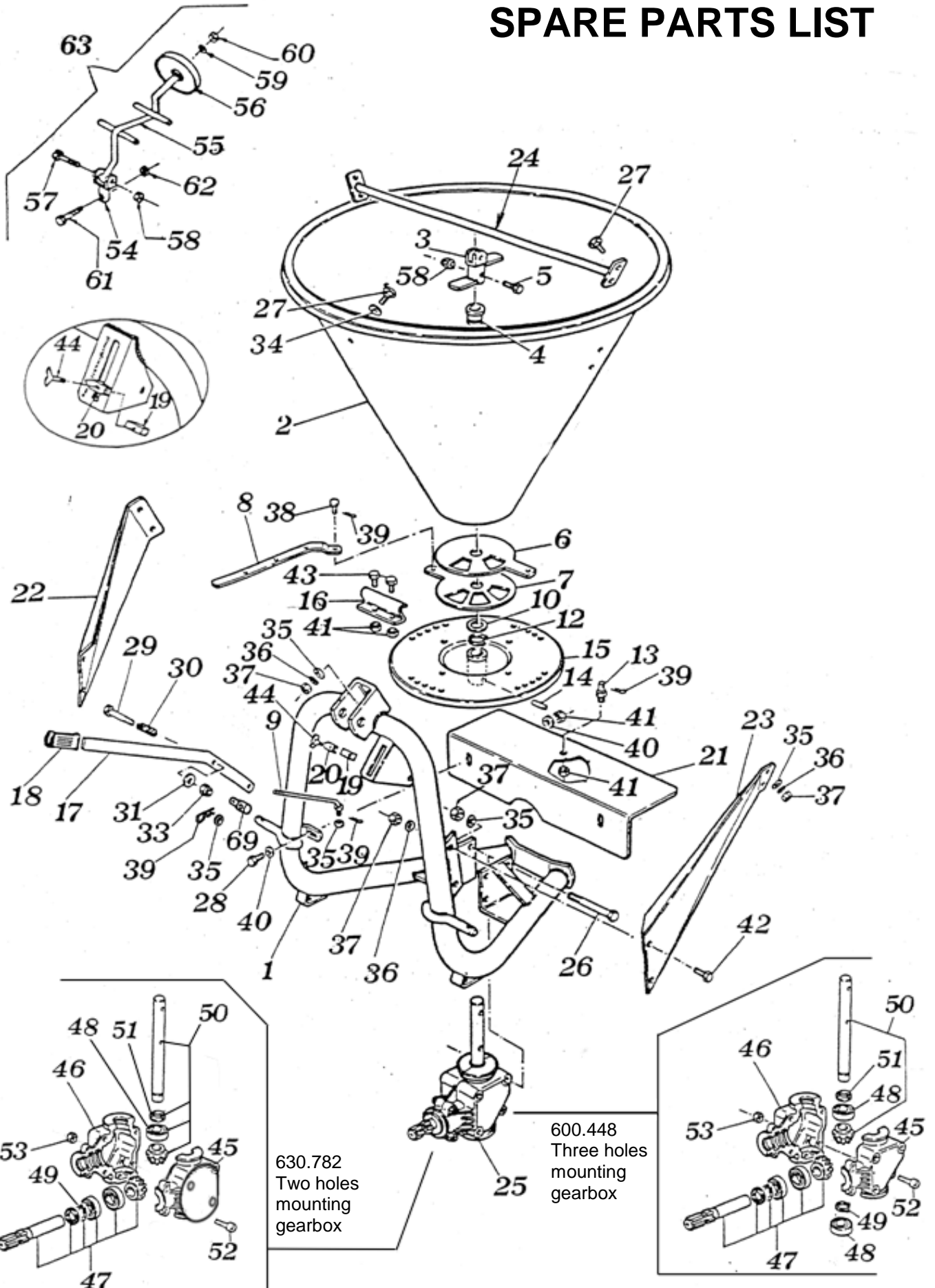
It allows to throw the fertilizer on the right and on the left side of the machine.



**Fig.16**

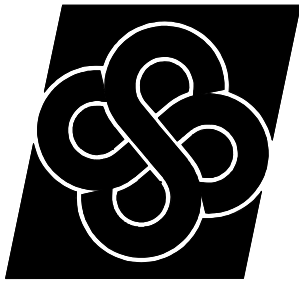
# **SPARE PARTS LIST**

# SPARE PARTS LIST



SPARE PARTS LIST - LISTE DBS PIÈCES DÉTACHÉES					
Part.No.- Réf	Qty. - Q.té	Code	DESCRIPTION	DESCRIPTION	
1	1	400.050	Frame	Châssis	
2	1	400.051	FS 50 Hopper	Trémie FS 50	
2	1	400.052	FS 100 Hopper	Trémie FS 100	
2	1	400.053	FS 150 Hopper	Trémie FS 150	
2	1	400.054	FS 250 Hopper	Trémie FS 250	
2	1	400.055	FS 300 Hopper	Trémie FS 300	
2	1	400.056	FS 400 Hopper	Trémie FS 400	
2	1	400.057	FS 500 Hopper	Trémie FS 500	
3	1	400.046	Agitator	Agitateur	
4	1	400.058	Bushing	Bague	
5	1	600.551	Screw	Vis	
6	1	400.059	Disc	Disque dosage	
7	1	400.060	Spreading adjustment disc	Disque réglage épandage	
8	1	400.061	Spreading adjustment lever	Tige réglage épandage	
9	1	400.260	Rate adjustment rod	Tige réglage quantité	
10	1	400.063	Washer	Rondelle	
12	1	600.110	Snap ring	Seeger	
13	1	400.047	Pin	Pivot	
14	1	600.108	Pin	Goupille	
15	1	400.065	Spinner	Disque épandage	
16	4	400.066	Fin	Disque	
17	1	400.067	Rate adjustment lever	Levier	
18	1	600.450	Handle	Poignée	
19	1	400.001	Locking device	Etrier	
20	1	400.021	Indicator	Indicateur	
21	1	400.068	Crankcase	Carter	
22	1	400.069	R. H. Arm	Droite	
23	1	400.070	L. H. Arm	Gauche	
24	1	400.071	Tie rod	Tirant	
25	1	600.448	Gearbox assy	Boite	
		630.782	Gearbox assy	Boite	
26	3	600.074	Screw	Vis	
27	5	600.319	Screw	Vis	
28	10	600.057	Screw	Vis	
29	1	600.528	Screw	Vis	
30	1	400.048	Spring	Ressort	
31	1	400.049	Washer	Rondelle	
33	1	600.554	Nut	Écrou	
34	1	600.092	Washer	Rondelle	
35	8	600.322	Washer	Rondelle	
36	5	600.097	Washer	Rondelle	
37	12	600.627	Nut	Écrou	
38	1	400.072	Pin	Pivot	
39	4	600.113	Split pin	Goupille	

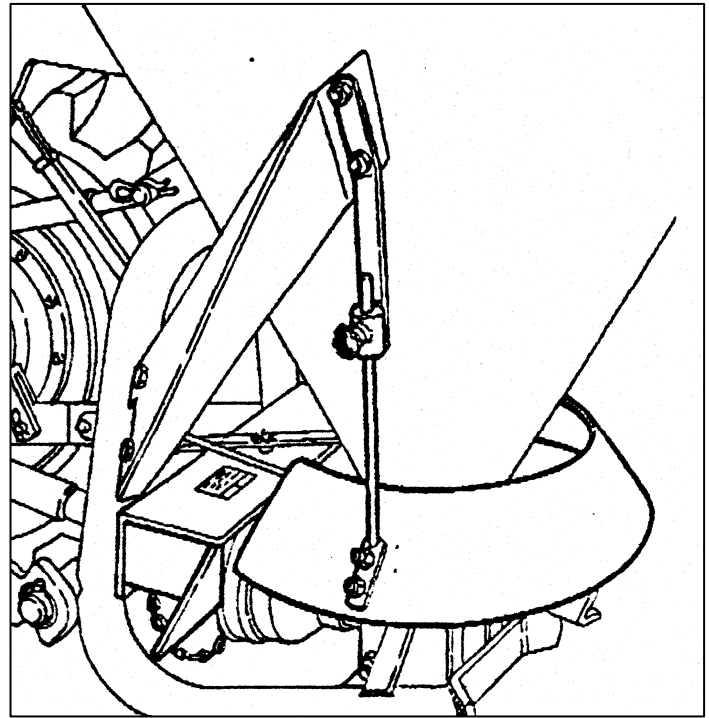
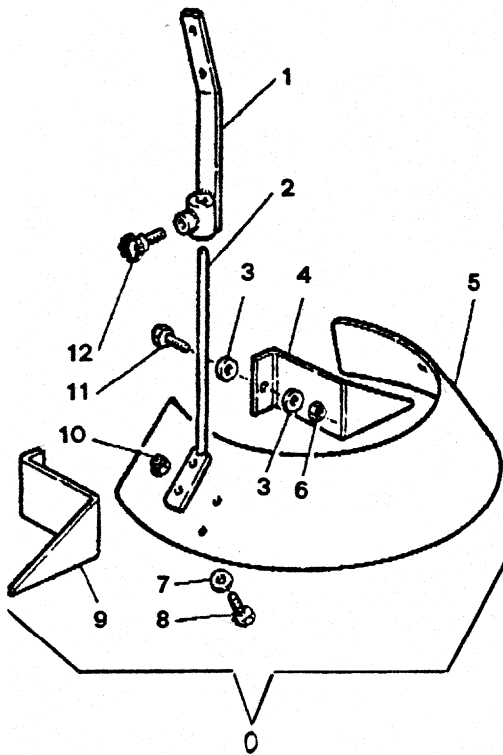
SPARE PARTS LIST - LISTE DBS PIECES DETACHEES					
Part.No.- Réf	Qty. - Q.té	Code	DESCRIPTION	DESCRIPTION	
40	4	600.115	Washer	Rondeile	
41	10	600.553	Nut	Ecrou	
42	4	600.006	Screw	Vis	
43	4	600.060	Screw	Vis	
44	1	600.184	Screw with wing	Vis	
45	1	600.313	R.H. Semi-Gearbox	Demi carter, droite	
	1	630.783	R.H. Semi-Gearbox	Demi carter, droite	for 630.782
46	1	600.314	L.H. Semi-Gearbox	Demi carter, gauche	
	1	630.784	L.H. Semi-Gearbox	Demi carter, gauche	for 630.782
47	1	600.315	Inlet shaft assy	Arbre entrée complet	
	1	630.790	Inlet shaft assy	Arbre entrée complet	for 630.782
48	2	600.320	Bearing	Palier	
49	3	600.316	Snap ring	Seeger - Anneau ressort	
50	1	600.449	Outlet shaft assy	Arbre sortie complet	
	1	630.789	Outlet shaft assy	Arbre sortie complet	for 630.782
51	1	600.318	Grommet	Joint à huile	
	2	630.785	Grommet	Joint à huile	for 630.782
52	3 - 6	600.312	Screw	Vis	
53	3 - 6	600.037	Nut	Ecrou	
54	1	400.041	Agitator pin	Goupille agitateur	
55	1	400.042	Agitator arm	Bras agitateur	
56	1	400.201	Agitator washer	Rondelle agitateur	
57	1	600.134	Screw	Vis	
58	1	600.076	Nut	Ecrou	
59	1	600.089	Washer	Rondeile	
60	1	600.366	Self-locking nut	Ecrou autobloquant	
61	1	600.404	Screw	Vis	
62	1	600.029	Nut	Ecrou	
63	1	400.200	Agit. assy (for powder fertilizer)	Agitat. complet (fert. en poudre)	
69	1	400.259	Pin	Pivot	



AGRICULTURAL MACHINERY

**sitrex**®  
Spa

***FS SPREADER***

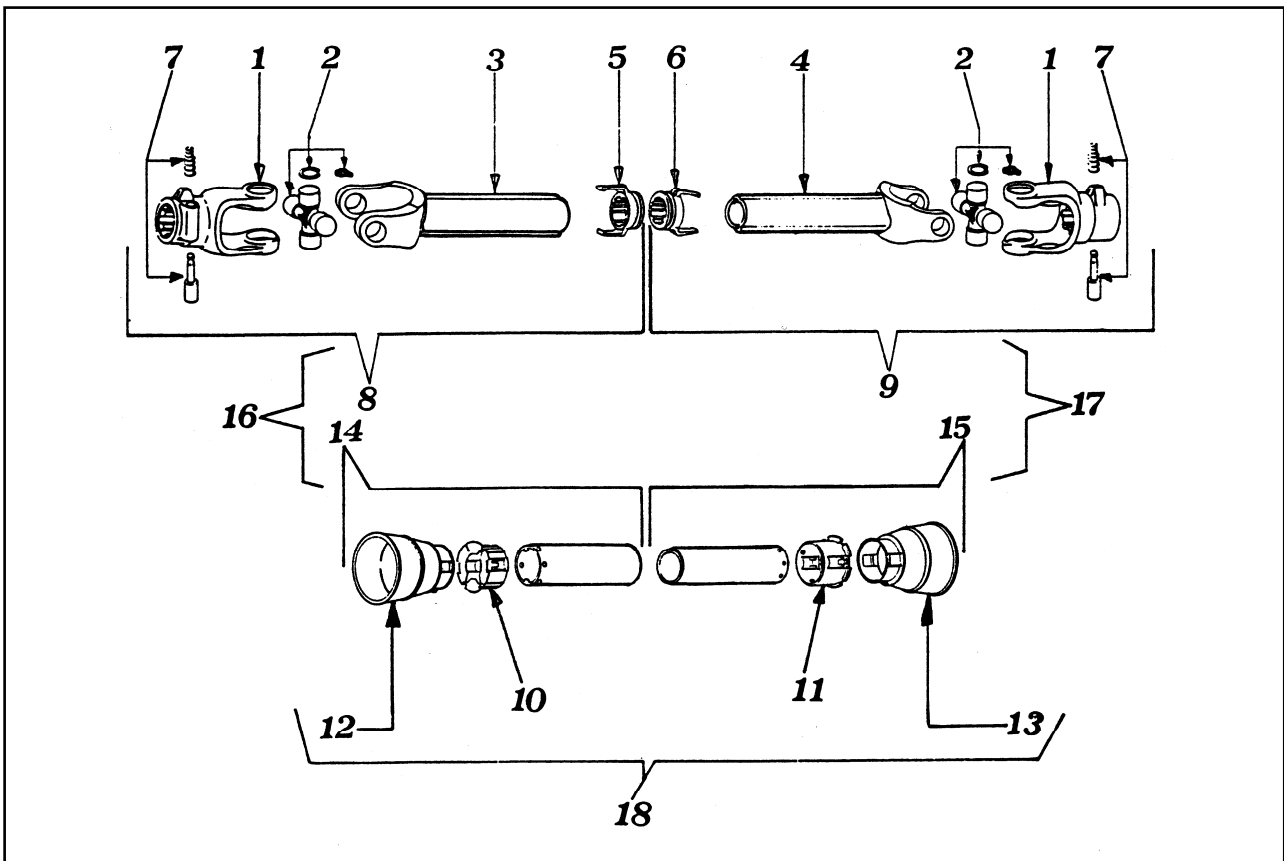


***DEFLECTOR KIT FOR SPREADING  
SALT AND SAND  
PART NO. 400.091***

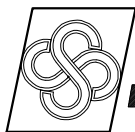
ITEM	PART NO.	Q.ty	DESCRIPTION	Note
0	1	400.091	KIT, COMPLETE	
1	2	400.092	HOPPER SUPPORT	
2	2	400.093	ADJUSTMENT PIPE	
3	4	600.887	WASHER	
4	1	400.094	DECK DEFLECTOR, R.H.	
5	1	400.095	CONE-SHAPED DEFLECTOR	
6	2	600.888	NUT	
7	4	600.889	WASHER	
8	4	600.890	SCREW	
9	1	400.096	DECK DEFLECTOR, L.H.	
10	4	600.891	NUT	
11	2	600.892	SCREW	
12	2	600.893	HANDWHEEL	



## CARDAN SHAFT 600.396



CARDAN SHAFT/ARBRE A CARDAN 600.396				
ITEM	PART NO	Q.ty	DESCRIPTION	NOTE
1	610.099	2	YOKE	
2	610.100	2	CROSS JOURNAL ASS.	
3	610.101	1	YOKE WITH OUTER TUBE	
4	610.102	1	YOKE WITH INNER TUBE	
5	610.103	1	RING FOR OUTER TUBE	
6	610.104	1	RING FOR INNER TUBE	
7	610.057	2	COMPLETE PUSH BUTTON	
8	610.105	1	HALF SHAFT-WITHOUT GUARD	
9	610.106	1	HALF SHAFT-WITHOUT GUARD	
10	610.107	1	OUTER BEARING	
11	610.114	1	INNER BEARING	
12	610.108	1	OUTER BASIC CONE	
13	610.108	1	INNER BASIC CONE	
14	610.109	1	OUTER HALF GUARD	
15	610.110	1	INNER HALF GUARD	
16	610.111	1	OUTER HALF SHAFT-WITH GUARD	
17	610.112	1	INNER HALF SHAFT- WITH GUARD	
18	610.113	1	COMPLETE GUARD	



**sitrex** AGRICULTURAL MACHINERY <sup>®</sup> Spq .

Zona Industriale-Viale Grecia, 8  
06018 TRESTINA-(Perugia)-ITALY  
Tel. +39.075.8540021-Telefax +39.075.8540523  
e-mail: sitrex@sitrex.it www.sitrex.com

